



Instructions

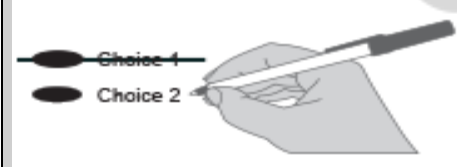
How to vote



Use a dark blue or black ink pen to completely fill in the oval to the left of your choice.

Vote for one in each race. If you vote for more than one, no votes will be counted for that race.

If you make a mistake



Draw a line through the entire measure response. Then you may make another choice.

Lewis County Elections

For a replacement ballot, or for information on Accessible Voting Units (available 18 days before Election Day), please call us at (360) 740-1278 or toll-free within Lewis County: (800) 562-6130 ext. 1278.



Who donates to campaigns?

For a list of the people and organizations that donated to state and local candidates and ballot measure campaigns, visit www.pdc.wa.gov

Local Measures

**Mossyrock School District No. 206
Proposition No. 1**

**Replacement Educational Programs
and Operations Levy**

The Board of Directors of Mossyrock School District adopted Resolution No. 24.25.08 concerning a replacement levy for education. This proposition would authorize the District to levy the following excess taxes, to replace an expiring levy to support the District's educational programs and operations which are not funded or not fully funded by the State:

<u>Collection Years</u>	<u>Approximate Levy Rate/\$1,000 Assessed Value</u>	<u>Levy Amount</u>
2026	\$1.27	\$1,475,686
2027	\$1.27	\$1,647,682
2028	\$1.27	\$1,741,495

Should this proposition be approved?

- Yes
- No

**Onalaska School District No. 300
Proposition No. 1**

**Educational Programs
and Operation Replacement Levy**

The Board of Directors of Onalaska School District No. 300 adopted Resolution No. 24-25-10, concerning a proposition for a replacement levy for education. This proposition would authorize the District to levy the following excess taxes, to replace an expiring levy, upon all taxable property within the District, to finance educational programs and operation expenses not funded by the State:

<u>Collection Year</u>	<u>Estimated Levy Rate/\$1,000 Assessed Value</u>	<u>Levy Amount</u>
2026	\$1.25	\$1,891,440
2027	\$1.25	\$1,948,184
2028	\$1.25	\$2,006,629

all as provided in Resolution No. 24-25-10 and subject to legal limits on levy rates and amounts at the time of levy. Should this proposition be approved?

- Levy Yes
- Levy No

**Thank you for voting!
Please return your ballot by:
April 22, 2025**

Local Measures

Winlock School District No. 232 Proposition No. 1

Educational Programs and Operations Replacement Levy

The Board of Directors of Winlock School District No. 232 adopted resolution No. 2025-02, concerning a proposition for a replacement levy for education. This proposition would authorize the District to levy the following excess taxes, in place of an expiring levy, on all taxable property within the District, to pay educational programs and operations expenses not funded by the State of Washington:

<u>Collection Year</u>	<u>Estimated Levy Rate/\$1,000 Assessed Value</u>	<u>Levy Amount</u>
2026	\$1.12	\$1,480,000
2027	\$1.12	\$1,682,000

all as provided in Resolution No. 2025-02. Should this proposition be approved?

- Levy Yes
 Levy No

Lewis County Fire Protection District No. 4 Proposition No. 1

Bonds to Construct New Fire Station

The Board of Fire Commissioners of Lewis County Fire Protection District No. 4 adopted Resolution No. 25-02, concerning emergency response facilities to protect public health, life and property. This proposition would authorize the District to: construct a new fire station to replace the existing station, sized to meet current and future firefighting and emergency response needs; issue no more than \$3,000,000 of general obligation bonds maturing within 20 years; and levy annual excess property taxes to repay the bonds, all as provided in Resolution No. 25-02. Should this proposition be:

- Approved
 Rejected