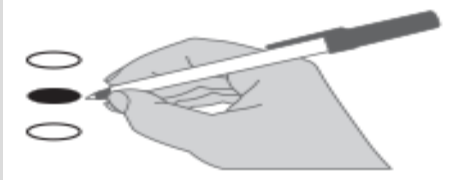




Instructions

How to vote

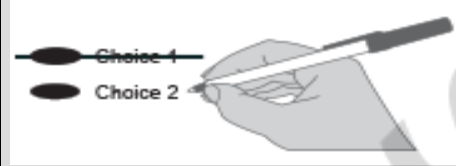


Use a blue or black ink pen to fill in the oval to the left of your choice.

Vote for one in each race.

If you vote for more than one, no votes will be counted for that race.

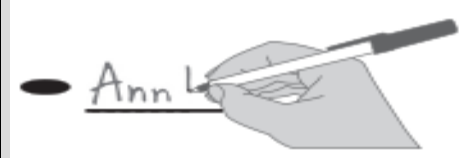
If you make a mistake



Draw a line through the entire measure response or candidate's name.

Then you may make another choice.

Optional Write-in



To vote for a candidate not listed for that race, fill in the oval to the left of blank space and print the name of the **declared write-in candidate** to the right of the oval.

Who donates to campaigns?

View information on financial contributors for presidential candidates:

Federal Election Commission

www.fec.gov
Toll Free (800) 424-9530

View contributors for state and local campaigns:

Public Disclosure Commission

www.pdc.wa.gov
Toll Free (800) 601-2828

Note: This is a sample ballot. Not all of these candidates or measures will appear on your regular ballot. Your ballot will only contain candidates/measures for which you are eligible to vote. Be sure to follow all instructions on your ballot.

Initiative to the People

Initiative Measure No. 2066

Initiative Measure No. 2066 concerns regulating energy services, including natural gas and electrification. This measure would repeal or prohibit certain laws and regulations that discourage natural gas use and/or promote electrification, and require certain utilities and local governments to provide natural gas to eligible customers.

Should this measure be enacted into law?

- Yes
- No

Initiatives to the Legislature

Initiative Measure No. 2109

Initiative Measure No. 2109 concerns taxes. This measure would repeal an excise tax imposed on the sale or exchange of certain long-term capital assets by individuals who have annual capital gains of over \$250,000. This measure would decrease funding for K-12 education, higher education, school construction, early learning, and childcare.

Should this measure be enacted into law?

- Yes
- No

Initiative Measure No. 2117

Initiative Measure No. 2117 concerns carbon tax credit trading. This measure would prohibit state agencies from imposing any type of carbon tax credit trading, and repeal legislation establishing a cap and invest program to reduce greenhouse gas emissions. This measure would decrease funding for investments in transportation, clean air, renewable energy, conservation, and emissions-reduction.

Should this measure be enacted into law?

- Yes
- No

Initiative Measure No. 2124

Initiative Measure No. 2124 concerns state long term care insurance. This measure would provide that employees and self-employed people must elect to keep coverage under RCW 50B.04 and could opt-out any time. It would also repeal a law governing an exemption for employees. This measure would decrease funding for Washington's public insurance program providing long-term care benefits and services.

Should this measure be enacted into law?

- Yes
- No

Federal: Partisan Offices

United States President/Vice President

- Kamala D. Harris / Tim Walz (Prefers Democratic Party)
- Donald J. Trump / JD Vance (Prefers Republican Party)
- Robert F. Kennedy Jr. / Nicole Shanahan (Prefers We The People Party)
- Jill Stein / Rudolph Ware (Prefers Green Party)
- Claudia De la Cruz / Karina Garcia (Prefers Socialism and Liberation Party)
- Rachele Fruit / Dennis Richter (Prefers Socialist Workers Party)
- Joseph Kishore / Jerry White (Prefers Socialist Equality Party)
- Chase Oliver / Mike ter Maat (Prefers Libertarian Party)
- Cornel West / Melina Abdullah (Prefers Justice For All Party)
- Shiva Ayyadurai / Crystal Ellis (Prefers Independent Candidates Party)
-

READ: Each candidate for President and Vice President is the official nominee of a political party. For other partisan offices, each candidate may state a political party that he or she prefers. A candidate's preference does not imply that the candidate is nominated or endorsed by the party, or that the party approves of or associates with that candidate.

U.S. Senator

- Maria Cantwell (Prefers Democratic Party)
- Dr Raul Garcia (Prefers GOP Party)
-

Congressional District 3 U.S. Representative

- Marie Gluesenkamp Perez (Prefers Democratic Party)
- Joe Kent (Prefers Republican Party)
-

Thank you for voting!
Please return your ballot by:
November 5, 2024

Vote Both Sides

State: Partisan Offices

Governor

- Bob Ferguson (Prefers Democratic Party)
- Dave Reichert (Prefers Republican Party)
-

Lt. Governor

- Denny Heck (Prefers Democratic Party)
- Dan Matthews (Prefers Republican Party)
-

Secretary of State

- Steve Hobbs (Prefers Democratic Party)
- Dale Whitaker (Prefers Republican Party)
-

State Treasurer

- Mike Pellicciotti (Prefers Democratic Party)
- Sharon Hanek (Prefers Republican Party)
-

State Auditor

- Pat (Patrice) McCarthy (Prefers Democratic Party)
- Matt Hawkins (Prefers Republican Party)
-

Attorney General

- Pete Serrano (Prefers Republican Party)
- Nick Brown (Prefers Democratic Party)
-

Commissioner of Public Lands

- Jaime Herrera Beutler (Prefers Republican Party)
- Dave Upthegrove (Prefers Democratic Party)
-

State: Nonpartisan Office

Superintendent of Public Instruction

- Chris Reykdal
- David Olson
-

State: Partisan Offices

Insurance Commissioner

- Patty Kuderer (Prefers Democratic Party)
- Phil Fortunato (Prefers Republican Party)
-

Legislative District 19 State Senator

- Jeff Wilson (Prefers Republican Party)
- Andi Day (Prefers Democratic Party)
-

Legislative District 19 State Representative Pos. 1

- Jim Walsh (Prefers Republican Party)
- Mike Coverdale (Prefers Democratic Party)
-

Legislative District 19 State Representative Pos. 2

- Joel McEntire (Prefers Republican Party)
- Terry Carlson (Prefers Democratic Party)
-

Legislative District 20 State Senator

- John Braun (Prefers Republican Party)
-

Legislative District 20 State Representative Pos. 1

- Peter Abbarno (Prefers Republican Party)
- Melvin Kaleolani Apana (Prefers Culture Republican Party)
-

Legislative District 20 State Representative Pos. 2

- Ed Orcutt (Prefers GOP Party)
-

County: Partisan Offices

Lewis County Commissioner District 1

- Sean Swope (Prefers Republican Party)
- Damian A Bean (Prefers Democratic Party)
-

Lewis County Commissioner District 2

- Lindsey Remund Pollock (Prefers Republican Party)
- Christina Riley (Prefers Republican Party)
-

Judicial: Nonpartisan Offices

Supreme Court Justice Position #02

- Sal Mungia
- Dave Larson
-

Supreme Court Justice Position #08

- Steve Gonzalez
-

Supreme Court Justice Position #09

- Sheryl Gordon McCloud
-

Court of Appeals, Division 2 District 3, Judge Position 1

- Bernard F. Veljacic
-

Lewis County Superior Court Judge Position 1

- J Andrew Toynbee
-

Lewis County Superior Court Judge Position 2

- Paul A. Strophy
-

Lewis County Superior Court Judge Position 3

- Joely Yeager
-

Public Utility District No. 1: Nonpartisan Offices

PUD Commissioner District 2

- Dave Fenn
- Angie Brown
-

Local Measures

Lewis County, WA

Proposition No. 1

Two-tenths of One Percent Sales and Use Tax for Emergency 911 Communications Systems and Facilities

The Lewis County Board of County Commissioners adopted Resolution No. 24-226 concerning a proposition to increase the sales and use tax.

The proposition would increase the sales and use tax within Lewis County by two-tenths of one percent for the purpose of providing funds for the costs associated with financing, design, acquisition, construction, equipping, operating, maintaining, remodeling, repairing, re-equipping and improvements of emergency communications systems and facilities.

Should this proposition be approved?

- Yes
- No

Vote Both Sides

Local Measures

Lewis County Fire Protection District No. 11

Proposition No. 1

Property Tax Levy for Fire Protection and Emergency Medical Services

The Board of Lewis County Fire Protection District No. 11 adopted Resolution No. 08-02-24 concerning a proposition to maintain and adequately fund District operations.

This proposition authorizes the District to establish its regular property tax levy at \$1.50 per \$1,000 of assessed value to be assessed in 2024 and collected in 2025. The funds will maintain and improve fire protection and emergency medical services, replace apparatus, equipment and facilities and provide for firefighter safety. The maximum allowable levy in 2024 shall serve as the base for subsequent levy limitations as provided by chapter 84.55 RCW.

Should this proposition be:

Approved

Rejected

Lewis County Fire Protection District No. 15

Proposition No. 1

Property Tax Levy for Fire Protection and Emergency Medical Services

The Board of Lewis County Fire Protection District No. 15 adopted Resolution No. 2024-06-02 concerning a proposition to maintain and adequately fund District operations.

This proposition would finance fire protection and emergency medical services by establishing the District's regular property tax levy in 2024 at an amount not to exceed \$1.35 per \$1,000.00 of assessed valuation and authorize setting the limit factor at 103% for each of the following five years. The maximum allowable levy in the final year shall serve as the base for subsequent levy limitations as provided by Chapter 84.55 RCW.

Should this proposition be:

Approved

Rejected

Vote Both Sides

Sample