



Instructions

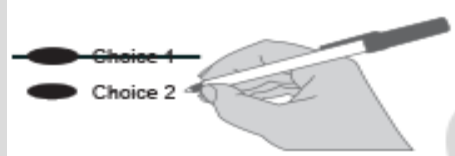
How to vote



Use a dark blue or black ink pen to completely fill in the oval to the left of your choice. **Do not use felt tip markers.**

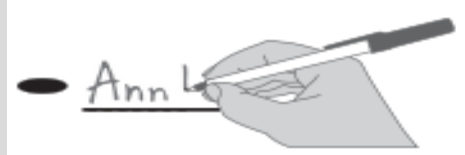
Vote for one in each race. If you vote for more than one, no votes will be counted for that race.

If you make a mistake



Draw a line through the entire measure response or candidate's name. Then you may make another choice.

Optional Write-in



To vote for a candidate not listed for that race, fill in the oval to the left of the line and print the name of the candidate.

Lewis County Elections

For a replacement ballot, or for information on Accessible Voting Units (available 18 days before Election Day), please call us at (360) 740-1278 or toll-free within Lewis County: (800) 562-6130 ext. 1278.



Who donates to campaigns?

View information on financial contributors for federal candidates: Federal Election Commission www.fec.gov Toll Free (800) 424-9530

View financial contributors for state and local candidates and measures: Public Disclosure Commission www.pdc.wa.gov Toll Free (800) 601-2828

READ: Each candidate for partisan office may state a political party that he or she prefers. A candidate's preference does not imply that the candidate is nominated or endorsed by the party, or that the party approves of or associates with that candidate.

Federal: Partisan Offices

U.S. Senator

- Mel Ram (Prefers Republican Party)
- Dr Raul Garcia (Prefers GOP Party)
- David Tilton (Prefers Non-Partisan Party)
- Maria Cantwell (Prefers Democratic Party)
- Chuck Jackson (Prefers Independent Party)
- Isaac A Holyk (Prefers Republican Party)
- Henry Clay Dennison (Prefers Socialist Workers Party)
- Scott Nazarino (Prefers Republican Party)
- Paul Lawrence Giesick (Prefers Democratic Party)
- Thor Amundson (Prefers Independent Party)
- Goodspaceguy (Prefers Republican Party)
-

Congressional District 3 U.S. Representative

- Leslie Lewallen (Prefers Republican Party)
- Joe Kent (Prefers Republican Party)
- John Saulie-Rohman (Prefers Independent Party)
- Marie Gluesenkamp Perez (Prefers Democratic Party)
-

State: Partisan Offices

Governor

- Jim Daniel (Prefers Republican Party)
- Cassandra Magdalene Hanson (Prefers Democratic Party)
- Jeff Curry (Prefers Independent Party)
- Alex Tsimerman (Prefers Standup-America Party)
- Mark Mullet (Prefers Democratic Party)
- Martin Lee Wheeler (Prefers Republican Party)
- Jennifer Hoover (Prefers Republican Party)
- Andre Stackhouse (Prefers Green Party)
- EL'ona Kearney (Prefers Democratic Party)
- Ricky Anthony (Prefers Democratic Party)
- Bob Ferguson (Prefers Democratic Party)
- Chaytan Inman (Prefers Democratic Party)
- Michael DePaula (Prefers Libertarian Party)
- Dave Reichert (Prefers Republican Party)
- Don L Rivers (Prefers Democratic Party)
- Jim Clark (States No Party Preference)
- Fred Grant (Prefers Democratic Party)
- Leon A Lawson (Prefers Trump Republican Party)
- Edward Cale IV (Prefers Democratic Party)
- Frank Dare (Prefers Independent Party)
- William Combs (Prefers Independent Party)
- Alan Makayev (Prefers Nonsense Busters Party)
- Brian Bogen (Prefers Nonpartisan Party)
- A.L. Brown (Prefers Republican Party)
- Brad Mjelde (States No Party Preference)
- Bill Hirt (Prefers Republican Party)
- Rosetta Marshall-Williams (Prefers Independence Party)
- Semi Bird (Prefers Republican Party)
-

Lt. Governor

- Patrick "Pat" Harman (Prefers Liberal Republican Party)
- David Griffin (Prefers Democratic Party)
- Bob Hagglund (Prefers Republican Party)
- Dan Matthews (Prefers Republican Party)
- Denny Heck (Prefers Democratic Party)
-

Vote Both Sides

State: Partisan Offices

Secretary of State

Marquez Tiggs
(Prefers Democratic Party)

Dale Whitaker
(Prefers Republican Party)

Damon Townsend
(Prefers No Labels Party)

Steve Hobbs
(Prefers Democratic Party)

State Treasurer

Mike Pellicciotti
(Prefers Democratic Party)

Sharon Hanek
(Prefers Republican Party)

State Auditor

Matt Hawkins
(Prefers Republican Party)

Pat (Patrice) McCarthy
(Prefers Democratic Party)

Attorney General

Pete Serrano
(Prefers Republican Party)

Nick Brown
(Prefers Democratic Party)

Manka Dhingra
(Prefers Democratic Party)

Commissioner of Public Lands

Allen Lebovitz
(Prefers Democratic Party)

Jaime Herrera Beutler
(Prefers Republican Party)

Dave Upthegrove
(Prefers Democratic Party)

Sue Kuehl Pederson
(Prefers Republican Party)

Patrick DePoe
(Prefers Democratic Party)

Jeralee Anderson
(Prefers Democratic Party)

Kevin Van De Wege
(Prefers Democratic Party)

State: Non-Partisan Office

Superintendent of Public Instruction

Reid Saaris

Chris Reykdal

John Patterson Blair

David Olson

State: Partisan Offices

Insurance Commissioner

Patty Kuderer
(Prefers Democratic Party)

Chris D. Chung
(Prefers Democratic Party)

Jonathan Hendrix
(States No Party Preference)

Bill Boyd
(Prefers Democratic Party)

John Pestinger
(Prefers Democratic Party)

Tim Verzal
(States No Party Preference)

Phil Fortunato
(Prefers Republican Party)

Justin Murta
(Prefers Republican Party)

**Legislative District 19
State Senator**

Jeff Wilson
(Prefers Republican Party)

Andi Day
(Prefers Democratic Party)

**Legislative District 19
State Representative Pos. 1**

Jim Walsh
(Prefers Republican Party)

Mike Coverdale
(Prefers Democratic Party)

**Legislative District 19
State Representative Pos. 2**

Terry Carlson
(Prefers Democratic Party)

Joel McEntire
(Prefers Republican Party)

Justin Franks
(Prefers Libertarian Party)

**Legislative District 20
State Senator**

John Braun
(Prefers Republican Party)

**Legislative District 20
State Representative Pos. 1**

Melvin Kaleolani Apana
(Prefers Culture Republican Party)

Peter Abbarno
(Prefers Republican Party)

**Legislative District 20
State Representative Pos. 2**

Ed Orcutt
(Prefers GOP Party)

Judicial

**Supreme Court
Justice Position 2**

Todd A. Bloom

Sal Mungia

David R Shelvey

Dave Larson

County: Partisan Office

**County Commissioner
District 1**

Peter N. Lahmann Jr.
(Prefers Republican Party)

Damian A Bean
(Prefers Democratic Party)

Sean Swope
(Prefers Republican Party)

**County Commissioner
District 2**

Lindsey Remund Pollock
(Prefers Republican Party)

Christina Riley
(Prefers Republican Party)

**Public Utility District No. 1:
Nonpartisan Offices**

**Public Utility District
Commissioner District 2**

Jilona Speer

Dave Fenn

Angie Brown

Jerry Lord

Julie Balmelli-Powe

Vote Both Sides

Local Measures

Lewis County Fire Protection District No. 5

Proposition No. 1

Emergency Services Levy

Lewis County Fire Protection District No. 5 Board of Commissioners adopted Resolution 2024-04 concerning a proposition to continue its regular EMS property tax levy. Will Lewis County Fire Protection District No. 5 be authorized to fund emergency medical services by continuing its regular property tax levy at a rate of \$.49 per \$1000.00 of assessed valuation for a period of six consecutive years to be collected beginning in 2025?

- Yes
No

Lewis County Fire Protection District No. 10

Proposition No. 1

Property Tax Levy for Fire Protection and Emergency Medical Services

The Board of Lewis County Fire Protection District No. 10 adopted Resolution No. 2024-01 concerning a proposition to maintain and adequately fund District operations. This Proposition authorizes the District to establish its regular property tax levy at \$1.28 per \$1,000 of assessed value to be assessed in 2024 and collected in 2025. The funds will maintain and improve fire protection and emergency medical services, replace apparatus, equipment and facilities and allow for the hiring of paramedics. The maximum allowable levy in 2024 shall serve as the base for subsequent levy limitations as provided by chapter 84.55 RCW.

Should the proposition be:

- Approved
Rejected

Riverside Fire Authority

Proposition No. 1

Re-Authorizing Fire Property Tax Levy Rate of \$1.35 per \$1,000 of Assessed Valuation for a Six-Year Period (2025-2030)

The Board of Fire Commissioners for the Riverside Fire Authority adopted Resolution No. 2024-02, concerning a proposition to maintain, improve and adequately fund Authority operations. Proposition 1 will restore the Authority's regular fire tax levy to the previous voter-approved rate of \$1.35 per \$1,000 of assessed value for collection in 2025, and permit annual revenue increases of up to 6% for each of the succeeding five years (but never to exceed the \$1.50 per \$1,000 rate limit). The dollar amount of the levy in 2030 shall serve as the base for subsequent levy limitations as provided by Chapter 84.55 RCW. Shall Proposition 1 be approved?

- Levy, Yes
Levy, No

For this office only: In order to vote for precinct committee officer, a partisan office, you must affirm that you are a Democrat or a Republican and may vote only for one candidate from the party you select. Your vote for a candidate affirms your affiliation with the same party as the candidate. This preference is private and will not be matched to your name or shared.

Precinct Committee Officer

Evaline West Precinct Republican Precinct Committee Officer

- Clayton Swim
April Jones

Forest Precinct Republican Precinct Committee Officer

- Debbie Aust
Frank L. Corbin

Logan Precinct Republican Precinct Committee Officer

- Jared Ross
George Chandler

Napavine #1 Precinct Republican Precinct Committee Officer

- Jaimee Saling
Luis J. Manzo

Stearns Creek Precinct Republican Precinct Committee Officer

- Olga Miller
Janice Montgomery

Urquhart Precinct Republican Precinct Committee Officer

- Gail Bonagofski
Dawn Miles

Precinct Committee Officer

Centralia #6 Precinct Republican Precinct Committee Officer

- Ryan Stubbins
Dianne Dorey

Vote Both Sides

Sample