

PRESIDENTIAL PRIMARY
OFFICIAL BALLOT
LEWIS COUNTY, WASHINGTON
MARCH 12, 2024

Precinct: SAMPLE 10



Instructions

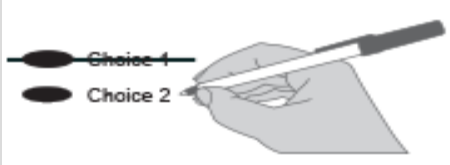
How to vote



Use a dark blue or black ink pen to completely fill in the oval to the left of your choice.

Vote for one candidate on the ballot. A ballot with *votes* for more than one candidate **will not** count.

If you make a mistake



Draw a line through the entire candidate's name. Then you may make another choice.

Optional Write-in



To vote for a candidate not listed for that race, fill in the oval to the left of the line and print the name of the candidate.

Lewis County Elections

For a replacement ballot, or information on Accessible Voting Units (available 18 days before Election Day), please call: (360) 740-1278 or toll-free within Lewis County: (800) 562-6130 ext. 1278.

Who donates to campaigns?

For a list of the people and organizations that donated to Presidential candidates' campaigns, visit www.fec.gov.

Democratic Party

President of the United States

If you marked the Democratic Party on your return envelope, vote for ONE Democrat below.

- Joseph R Biden Jr
- Dean Phillips
- Marianne Williamson
- Uncommitted Delegates
-

End of Democratic Party Ballot.
Do not vote for a candidate from the other party.

Republican Party

President of the United States

If you marked the Republican Party on your return envelope, vote for ONE Republican below.

- Chris Christie
- Ron DeSantis
- Nikki Haley
- Vivek Ramaswamy
- Donald J. Trump
-

End of Republican Party Ballot.
Do not vote for a candidate from the other party.

Thank you for voting!
Please return your ballot by:
March 12, 2024.

This page intentionally left blank.

Sample