

Official Ballot
 Special Election
 Lewis County, Washington
 February 13, 2018

Precinct **SAMPLE**

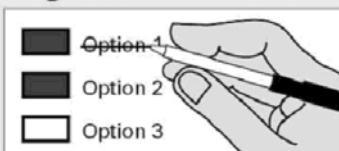
Instructions

How to vote



Use a dark ink pen to completely fill in the box to the left of your choice. Vote for one in each race. If you vote for more than one, no votes will be counted for that race.

If you make a mistake



Draw a line through the response or candidate's name. Then make another choice.

Lewis County Elections

For a replacement ballot, or for information on Accessible Voting Units (available 20 days before Election Day), please call: (360) 740-1278 or toll-free within Lewis County: (800) 562-6130 ext 1278



Who donates to campaigns?

View contributors for candidates and measures

Public Disclosure Commission

www.pdc.wa.gov
 Toll Free (877) 601-2828

**Adna School Dist. No. 226
 School Maintenance and Operation Levy**

Proposition 1

The Adna School District No. 226 adopted Resolution No. 17-18-02 concerning a proposition to replace an expiring levy. This proposition would authorize the District to levy the following amounts for General Fund maintenance and operation expenses on all taxable property within the District, all as provided in Resolution No. 17-18-02:

Collection Year	Approx. Levy Rate per \$1,000 Assessed Value	Levy Amount
2019	\$1.50	\$683,833
2020	\$1.50	\$718,025

Should this proposition be approved?

Yes

No

**Boistfort School Dist. No. 234
 Replacement for Educational Programs and Operations Levy**

Proposition No. 1

The Board of Directors of Boistfort School District adopted Resolution No. 17/18-01 authorizing a renewal educational levy. To continue high quality academic programs that are eligible activities and not state funded, this proposition authorizes the District to levy the following excess taxes, on all taxable property within the District:

Collection Year	Approx. Levy Rate per \$1,000 Assessed Value	Levy Amount
2019	\$1.50	\$250,000

all as provided in Resolution No. 17/18-01 and subject to legal limits on levy amounts and rates at the time of levy. Should this proposition be approved?

Yes

No

10000010100014

000000001102

1933031230

Vote Both Sides

**Official Ballot
Special Election
Lewis County, Washington
February 13, 2018**

Precinct *SAMPLE*

**Castle Rock School Dist. No. 401
Replacement Educational Enrichment Levy**

Proposition No. 1
The Board of Directors adopted Resolution No. 2017-76 concerning a proposition for a replacement levy for educational enrichment. This proposition provides for enrichment of the state's statutory program of basic education by authorizing the levy of the following excess taxes, to replace an expiring levy, on all taxable property within the District:

Collection Years	Approx. Levy Rate per \$1,000 Assessed Value	Levy Amount
2019	\$1.50	\$1,455,000
2020	\$1.50	\$1,605,000

Should this proposition be approved?

- Yes
 No

**Centralia School Dist. No. 401
Replacement Educational Programs and Operations Levy**

Proposition No. 1
The Board of Directors adopted Resolution No. 2017-26 concerning educational funding. This proposition authorizes the District to levy the following excess taxes, to replace an expiring levy, on all taxable property within the District, to support the District's educational programs and operations not funded by the state:

Collection Years	Approx. Levy Rate per \$1,000 Assessed Value	Levy Amount
2019	\$1.50	\$3,300,000
2020	\$1.50	\$3,500,000

all as provided in the Resolution. Should this proposition be approved?

- Yes
 No

**Eatonville School Dist. No. 404
Replacement Educational Programs and Operations Levy**

Proposition No. 1
The Board of Directors of Eatonville School District No. 404 adopted Resolution No. 685 concerning educational funding. If approved, Proposition No. 1 will authorize the District to levy the following excess taxes, replacing an expiring levy, on all taxable property within the District, to support the District's educational programs and daily operations, including teachers, staff, classroom materials, and textbooks not funded by the State of Washington:

Collection Year	Approx. Levy Rate per \$1,000 Assessed Value	Levy Amount
2019	\$2.51	\$3,695,438
2020	\$2.51	\$3,898,688

all as provided in Resolution No. 685. Should Proposition No. 1 be approved?

- Yes
 No

**Eatonville School Dist. No. 404
Capital Projects Levy**

Proposition No. 2
The Board of Directors of Eatonville School District No. 404 adopted Resolution No. 686 concerning a capital projects levy. If approved, Proposition No. 2 will authorize the District to levy the following excess taxes on all taxable property within the District to modernize and remodel District facilities, including acquisition of technology infrastructure:

Collection Year	Approx. Levy Rate per \$1,000 Assessed Value	Levy Amount
2019	\$0.25	\$368,072
2020	\$0.25	\$388,315
2021	\$0.25	\$409,673
2022	\$0.25	\$430,156
2023	\$0.25	\$451,664
2024	\$0.25	\$474,248

all as provided in Resolution No. 686. Should Proposition No. 2 be approved?

- Yes
 No

10000010200021

000000001205

1933031230

Vote Both Sides

Vote Both Sides

Official Ballot
Special Election
Lewis County, Washington
February 13, 2018

Precinct **SAMPLE**

**Oakville School Dist. No. 400
Educational Maintenance and
Operation Expenses Replacement Levy**

Proposition No. 1
The Board of Directors of Oakville School District No. 400 adopted Resolution No. 01-2017-10 concerning a proposition to finance maintenance and operation expenses. The proposition would authorize the District to meet the educational needs of its students by levying the following excess taxes, in place of an expiring levy, on all taxable property within the District, for support of the District's General Fund educational maintenance and operation expenses:

Collection Year	Approx. Levy Rate per \$1,000 Assessed Value	Levy Amount
2019	\$2.31	\$384,200
2020	\$2.31	\$384,200

All as provided in Resolution No. 01-2017-10. Should this proposition be approved?

- Yes
- No

**Pe Ell School Dist. No. 301
Replacement Educational Programs
and Operation Levy**

Proposition 1
The Board of Directors of Pe Ell School District No. 301 adopted Resolution No. 2017-10A, concerning a proposition to replace an expiring levy for education. This proposition would authorize the District to levy the following excess taxes, to replace an expiring levy, on all taxable property within the District, to finance General Fund educational programs and operation expenses not funded by the State of Washington:

Collection Year	Estimated Levy Rate/\$1,000 Assessed Value	Levy Amount
2019	\$1.50	\$350,000
2020	\$1.50	\$350,000

all as provided in Resolution No. 2017-10A and subject to legal limits on levy rates and amounts at the time of levy. Should this proposition be approved?

- Yes
- No

**Onalaska School Dist. No. 300
Bonds to Construct School Facilities**

Proposition 1
The Board of Directors of Onalaska School District No. 300 adopted Resolution No. 17-18-01, concerning a proposition to relieve overcrowding and improve educational opportunities. This proposition would authorize the District to: construct an addition for classrooms at Onalaska Middle School; construct a science, technology, engineering and math (STEM) building at Onalaska High School; construct a maintenance and records retention building on the Onalaska Middle School Campus; issue no more than \$7,250,000 of general obligation bonds maturing within 20 years; and levy annual excess property taxes to repay the bonds, all as provided in Resolution No. 17-18-01. Should this proposition be:

- Approved
- Rejected

**Toledo School Dist. No. 237
Bonds to Construct, Renovate and
Improve School Facilities-\$12,200,000**

Proposition No. 1
The Board of Directors of Toledo School District No. 237 approved a proposition for bonds. This proposition would authorize the District to upgrade and completely renovate Toledo High School and make other certain capital improvements to Toledo Middle School and Toledo Elementary School; to issue \$12,200,000 of general obligation bonds maturing within a maximum term of 21 years, and to levy excess property taxes annually to repay the bonds, all as provided in Resolution No. 2017-18-04. Should this proposition be:

- Approved
- Rejected

20000010300013

000000001102

1933031230

Vote Both Sides

**Official Ballot
Special Election
Lewis County, Washington
February 13, 2018**

Precinct *SAMPLE*

**Winlock School Dist. No. 232
Education Programs and
Operations Replacement Levy**

The Winlock School District No. 232 adopted Resolution No. 2017-18/6 concerning a proposition to replace an expiring education programs and operations levy. This proposition would authorize the District to finance educational operations and maintenance expenses by levying the following excess taxes in place of an expiring levy on all taxable property within the District.

Collection Year	*Approx. Levy Rate per \$1,000 Assessed Value	Levy Amount
2019	\$1.50	\$560,000
2020	\$1.50	\$600,000
2021	\$1.50	\$640,000
2022	\$1.50	\$680,000

*Or adjusted rate authorized by statute, not to exceed the rate required for the collection of the yearly levy amount listed.

Should this proposition be approved?

- Yes
- No

**Winlock School Dist. No 232
Capital Projects Levy**

The Winlock School District No. 232 adopted Resolution No. 2017-18/7 concerning a proposition to authorize a capital projects levy to fund the expenses of capital projects approved by the board to support the programs and operations of the District. This proposition would levy the following excess taxes on all taxable property within the District.

Collection Year	Approx. Levy Rate per \$1,000 Assessed Value	Levy Amount
2019	\$0.30	\$100,000
2020	\$0.30	\$100,000
2021	\$0.30	\$100,000
2022	\$0.30	\$100,000

Should this proposition be approved?

- Yes
- No

**Thank you for voting!
Please return your ballot by February 13, 2018.**

20000010400020

000000001205

1933031230