



Note: This is a sample ballot. Your ballot will only contain candidates/measures for which you are eligible to vote. Be sure to follow all instructions on your ballot.

Instructions

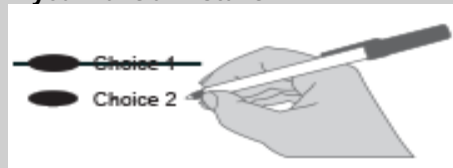
How to vote



Use a dark blue or black ink pen to completely fill in the oval to the left of your choice.

Vote for one in each race. If you vote for more than one, no votes will be counted for that race.

If you make a mistake



Draw a line through the entire measure response or candidate's name. Then you may make another choice.

Lewis County Elections

For a replacement ballot, or for information on Accessible Voting Units (available 18 days before Election Day), please call us at (360) 740-1278 or toll-free within Lewis County: (800) 562-6130 ext. 1278.



Who donates to campaigns?

For a list of the people and organizations that donated to state and local candidates and ballot measure campaigns, visit www.pdc.wa.gov

Local Measures

PROPOSITION NO. 1

CENTRALIA SCHOOL DISTRICT NO. 401

REPLACEMENT EDUCATIONAL PROGRAMS AND OPERATIONS LEVY

The Board of Directors of the Centralia School District adopted Resolution No. 2023-01 concerning this proposition to maintain educational funding. This proposition authorizes the District to levy the following excess taxes, to replace an expiring levy, on all taxable property within the District, to support the District's educational programs and operations not funded by the state:

<u>Collection Years</u>	<u>Approximate Levy Rate/\$1,000 Assessed Value</u>	<u>Levy Amount</u>
2024	\$1.50	\$6,700,000
2025	\$1.50	\$7,600,000

Should this proposition be approved?

YES

NO

Thank you for voting!
Please return your ballot by:
April 25, 2023

Sample

This page intentionally left blank.