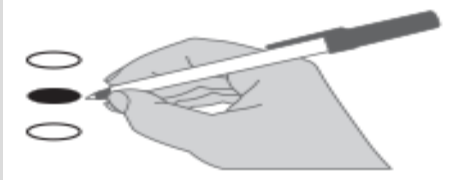




Note: This is a sample ballot. Your ballot will only contain candidates/measures for which you are eligible to vote. Be sure to follow all instructions on your ballot.

Instructions

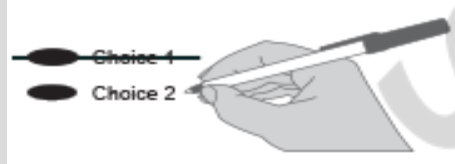
How to vote



Use a dark blue or black ink pen to completely fill in the oval to the left of your choice. **Do not use felt tip markers.**

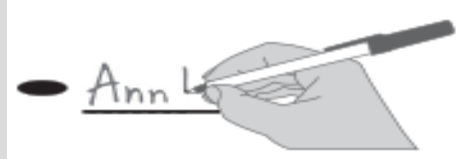
Vote for one in each race. If you vote for more than one, no votes will be counted for that race.

If you make a mistake



Draw a line through the entire measure response or candidate's name. Then you may make another choice.

Optional Write-in



To vote for a candidate not listed for that race, fill in the oval to the left of the line and print the name of the candidate.

Lewis County Elections

For a replacement ballot, or for information on Accessible Voting Units (available 18 days before Election Day), please call us at (360) 740-1278 or toll-free within Lewis County: (800) 562-6130 ext. 1278.



Who donates to campaigns?

For a list of the people and organizations that donated to state and local candidates and ballot measure campaigns, visit www.pdc.gov

Advisory Votes

**Advisory Vote No. 39
 Engrossed Substitute Senate
 Bill 5974**

The legislature increased, without a vote of the people, the tax on aircraft fuel from 11 cents to 18 cents per gallon, costing \$14 million in its first ten years, for government spending.

This tax increase should be:

- Repealed
- Maintained

**Advisory Vote No. 40
 Engrossed Substitute House
 Bill 2076**

The legislature imposed, without a vote of the people, premiums on "transportation network companies" to provide workers compensation to their drivers, costing an indeterminate amount in its first ten years, for government spending.

This tax increase should be:

- Repealed
- Maintained

READ: Each candidate for partisan office may state a political party that he or she prefers. A candidate's preference does not imply that the candidate is nominated or endorsed by the party, or that the party approves of or associates with that candidate.

Federal: Partisan Office

U.S. Senator

- Patty Murray (Prefers Democratic Party)
- Tiffany Smiley (Prefers Republican Party)
-

**Congressional District 3
 U.S. Representative**

- Marie Gluesenkamp Perez (Prefers Democratic Party)
- Joe Kent (Prefers Republican Party)
-

State: Partisan Offices

**Secretary of State
 2 Year Unexpired Term**

- Steve Hobbs (Prefers Democratic Party)
- Julie Anderson (Prefers Nonpartisan Party)
-

**Legislative District 19
 State Representative Pos. 1**

- Jim Walsh (Prefers Republican Party)
- Kelli Hughes-Ham (Prefers Democratic Party)
-

**Legislative District 19
 State Representative Pos. 2**

- Joel McEntire (Prefers Republican Party)
- Cara Cusack (Prefers Democratic Party)
-

**Legislative District 20
 State Representative Pos. 1**

- Peter Abbarno (Prefers Republican Party)
-

**Legislative District 20
 State Representative Pos. 2**

- Ed Orcutt (Prefers Republican Party)
-

County: Partisan Offices

Assessor

- Ross Nielson (Prefers Republican Party)
- Tom Crowson (Prefers Republican Party)
-

Auditor

- Larry E Grove (Prefers Republican Party)
-

Vote Both Sides

County: Partisan Offices

Clerk

- Scott Tinney
(Prefers Republican Party)
- Linda Williams
(Prefers Republican Party)
-

Coroner

- Warren McLeod
(Prefers Republican Party)
-

Prosecuting Attorney

- Jonathan L. Meyer
(Prefers Republican Party)
-

Sheriff

- Rob Snaza
(Prefers Republican Party)
- Tracy Murphy
(Prefers Republican Party)
-

Treasurer

- Arny Davis
(Prefers Republican Party)
-

**County Commissioner, District 3
4 Year Short & Full Term**

- Scott Brummer
(Prefers Republican Party)
- Harry O. Bhagwandin
(Prefers Republican Party)
-

Judicial: Nonpartisan Offices

Supreme Court, Justice Pos. 1

- Mary I. Yu
-

Supreme Court, Justice Pos. 5

- Barbara Madsen
-

Supreme Court, Justice Pos. 6

- G. Helen Whitener
-

**Court of Appeals Div. 2, Dist. 3
Judge Position 2**

- Anne Cruser
-

District Court Judge, Dept 1

- Wade S. Samuelson
-

District Court Judge, Dept 2

- R.W. Buzzard
-

**Public Utility District No. 1:
Nonpartisan Offices**

PUD - Commissioner District 3

- Mike Hadaller
- Kevin Emerson
-

Local Measures

**City of Morton
Proposition No. 1**

**Withdrawal from Intercounty
Library District**

The City of Morton adopted Resolution No. 521A concerning a proposition to withdraw from the Timberland Regional Library District of Lewis County. Voting "Yes" on this Proposition means the City should withdraw from the Library District and each parcel of real property located within the City will not be charged the applicable property tax assessment on an annual basis. Voting "No" on this Proposition means the City should remain in the Library District and each parcel of real property (not otherwise exempt) will continue to be charged the applicable property tax assessment on an annual basis.

Should this Proposition be approved?

- YES
- NO

Local Measures

**Lewis County Fire Protection
District No. 10
Proposition No. 1**

**Emergency Medical Services
Property Tax Levy**

Will Lewis County Fire Protection District No. 10 be authorized to continue funding emergency medical services for its citizens by continuing a regular property tax levy of \$.25 or less per \$1,000.00 of assessed valuation for a period of six consecutive years to be collected beginning in 2023?

- Yes
- No

Vote Both Sides