



Note: This is a sample ballot. Your ballot will only contain candidates/measures for which you are eligible to vote. Be sure to follow all instructions on your ballot.

**Instructions**

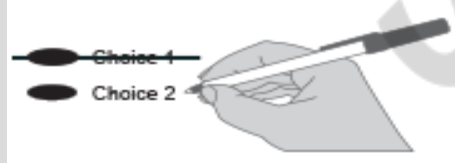
**How to vote**



Use a dark blue or black ink pen to completely fill in the oval to the left of your choice. **Do not use felt tip markers.**

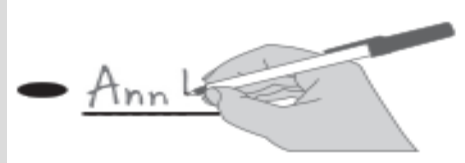
Vote for one in each race. If you vote for more than one, no votes will be counted for that race.

**If you make a mistake**



Draw a line through the entire measure response or candidate's name. Then you may make another choice.

**Optional Write-in**



To vote for a candidate not listed for that race, fill in the oval to the left of the line and print the name of the candidate.

**Lewis County Elections**

For a replacement ballot, or for information on Accessible Voting Units (available 18 days before Election Day), please call us at (360) 740-1278 or toll-free within Lewis County: (800) 562-6130 ext. 1278.

**Who donates to campaigns?**



For a list of the people and organizations that donated to state and local candidates and ballot measure campaigns, visit [www.pdc.gov](http://www.pdc.gov)

**READ: Each candidate for partisan office may state a political party that he or she prefers. A candidate's preference does not imply that the candidate is nominated or endorsed by the party, or that the party approves of or associates with that candidate.**

**Federal: Partisan Office**

**U.S. Senator**

- Henry Clay Dennison (Prefers Socialist Workers Party)
- Mohammad Hassan Said (Prefers Democratic Party)
- John Guenther (Prefers Republican Party)
- Tiffany Smiley (Prefers Republican Party)
- Dan Phan Doan (States No Party Preference)
- Dr Pano Churchill (Prefers Democratic Party)
- Dave Saulibio (Prefers JFK Republican Party)
- Sam Cusmir (Prefers Democratic Party)
- Bill Hirt (Prefers Republican Party)
- Jon Butler (Prefers Independent Party)
- Bryan Solstin (Prefers Democratic Party)
- Martin D. Hash (States No Party Preference)
- Patty Murray (Prefers Democratic Party)
- Thor Amundson (Prefers Independent Party)
- Charlie (Chuck) Jackson (Prefers Independent Party)
- Naz Paul (Prefers Independent Party)
- Ravin Pierre (Prefers Democratic Party)
- Leon Lawson (Prefers Trump Republican Party)
- 

**Federal: Partisan Office**

**Congressional District 3  
 U.S. Representative**

- Jaime Herrera Beutler (Prefers Republican Party)
- Chris Byrd (Prefers None / Independent Party)
- Marie Gluesenkamp Perez (Prefers Democratic Party)
- Vicki Kraft (Prefers Republican Party)
- Oliver Black (Prefers Am. Solidarity Party)
- Heidi St. John (Prefers Republican Party)
- Davy Ray (Prefers Democratic Party)
- Leslie L. French (Prefers Republican Party)
- Joe Kent (Prefers Republican Party)
- 

**State: Partisan Offices**

**Secretary of State  
 2 Year Unexpired Term**

- Bob Hagglund (Prefers Republican Party)
- Kurtis Engle (Prefers Union Party)
- Marquez Tiggs (Prefers Democratic Party)
- Tamborine Borrelli (Prefers America First (R) Party)
- Steve Hobbs (Prefers Democratic Party)
- Keith L. Wagoner (Prefers Republican Party)
- Mark Miloscia (Prefers Republican Party)
- Julie Anderson (Prefers Nonpartisan Party)
- 

**Legislative District 19  
 State Representative Pos. 1**

- Kelli Hughes-Ham (Prefers Democratic Party)
- Jim Walsh (Prefers Republican Party)
- 

**Legislative District 19  
 State Representative Pos. 2**

- Cara Cusack (Prefers Democratic Party)
- Jon-Erik Hegstad (Prefers Progressive Dem Party)
- Joel McEntire (Prefers Republican Party)
- 

**Vote Both Sides**

**State: Partisan Offices**

**Legislative District 20  
State Representative Pos. 1**

Peter Abbarno  
(Prefers Republican Party)

**Legislative District 20  
State Representative Pos. 2**

Ed Orcutt  
(Prefers Republican Party)

**County: Partisan Offices**

**Assessor**

Ross Nielson  
(Prefers Republican Party)

Tom Crowson  
(Prefers Republican Party)

**Auditor**

Larry E Grove  
(Prefers Republican Party)

**Clerk**

Linda Williams  
(Prefers Republican Party)

Scott Tinney  
(Prefers Republican Party)

**Coroner**

Warren McLeod  
(Prefers Republican Party)

**Prosecuting Attorney**

Jonathan L. Meyer  
(Prefers Republican Party)

**Sheriff**

Rob Snaza  
(Prefers Republican Party)

Tracy Murphy  
(Prefers Republican Party)

**Treasurer**

Arny Davis  
(Prefers Republican Party)

**County: Partisan Offices**

**County Commissioner,  
District 3  
4 Year Short & Full Term**

Pat Saldana  
(Prefers Republican Party)

Jodery (Jody) Goble  
(Prefers Republican Party)

Harry O. Bhagwandin  
(Prefers Republican Party)

Scott Brummer  
(Prefers Republican Party)

Pete D. Krabbe  
(Prefers Stop the steal Party)

**Public Utility District No. 1:  
Nonpartisan Offices**

**PUD Commissioner District  
3**

Tim Cournyer

Mike Hadaller

Kevin Emerson

**Local Measures**

**LEWIS COUNTY FIRE  
DISTRICT NO. 5  
PROPOSITION 1**

**AUTHORIZING  
RESTORATION OF A  
PERMANENT LEVY LID LIFT  
OF THE REGULAR PROPERTY  
TAX LEVY FOR FIRE  
PROTECTION AND  
EMERGENCY MEDICAL  
SERVICES**

Lewis County Fire District No. 5 Commissioners approved Resolution 2022-07 authorizing a levy lid increase to fund fire protection and emergency medical services. Beginning in 2023, this six-year levy will establish \$1.28 per \$1,000 valuation for 2023 and set the limit factor increase for each of the succeeding five years at 106%. The 2028 levy amount will be used to calculate subsequent levies per 84.55 RCW.

Should this proposition be:

Approved

Rejected

**Local Measures**

**LEWIS COUNTY FIRE DISTRICT  
NO. 6  
PROPOSITION 2**

**PROPOSITION AUTHORIZING  
AND CONTINUING REGULAR  
EMERGENCY MEDICAL SERVICES  
PROPERTY TAX LEVY**

The Board of Fire Commissioners of Lewis County Fire Protection District No. 6 adopted Resolution 2022-1 concerning a proposition to continue its emergency medical services property tax levy.

Will Lewis County Fire Protection District No. 6 be authorized to continue to fund emergency medical services for its citizens by continuing its regular property tax levy at a rate of \$.50 or less per \$1,000.00 of assessed valuation for a period of ten consecutive years to be collected beginning in 2023?

Yes

No

**For this office only:** In order to vote for precinct committee officer, a partisan office, you must affirm that you are a Democrat or a Republican and may vote only for one candidate from the party you select. Your vote for a candidate affirms your affiliation with the same party as the candidate. This preference is private and will not be matched to your name or shared.

**Precinct Committee Officer**

**Adna Precinct  
Republican Precinct Committee  
Officer**

Jim L. Smith  
I affirm I am a Republican.

Arny Davis  
I affirm I am a Republican.

**Berwick Precinct  
Republican Precinct Committee  
Officer**

Logan Ferrier  
I affirm I am a Republican.

Melody Faber  
I affirm I am a Republican.

**Cinebar Precinct  
Republican Precinct Committee  
Officer**

Clarence C. Lupo  
I affirm I am a Republican.

Carla Askew  
I affirm I am a Republican.

**Vote Both Sides**

**For this office only:** In order to vote for precinct committee officer, a partisan office, you must affirm that you are a Democrat or a Republican and may vote only for one candidate from the party you select. Your vote for a candidate affirms your affiliation with the same party as the candidate. This preference is private and will not be matched to your name or shared.

**Precinct Committee Officer**

**Claquato Precinct  
Republican Precinct Committee  
Officer**

- Mark Anders  
I affirm I am a Republican.
- Jennifer Lynn Hawes  
I affirm I am a Republican.

**Cowlitz Precinct  
Republican Precinct Committee  
Officer**

- Elizabeth Rohr  
I affirm I am a Republican.
- Traci Dutton  
I affirm I am a Republican.
- Dale Merten  
I affirm I am a Republican.

**Crego East Precinct  
Republican Precinct Committee  
Officer**

- Jo A. Moon  
I affirm I am a Republican.
- Ron Heikkila  
I affirm I am a Republican.

**Crego West Precinct  
Republican Precinct Committee  
Officer**

- Laurie Gunsolley  
I affirm I am a Republican.
- Douglas Peterson  
I affirm I am a Republican.
- Neil Stewart jr  
I affirm I am a Republican.

**Curtis Precinct  
Republican Precinct Committee  
Officer**

- Fred S Chapman III  
I affirm I am a Republican.
- Susan M Remund  
I affirm I am a Republican.

**Drews Prairie Precinct  
Republican Precinct Committee  
Officer**

- Miriam Montenegro  
I affirm I am a Republican.
- Dave Germain  
I affirm I am a Republican.
- Shawn Robertson  
I affirm I am a Republican.

**Precinct Committee Officer**

**Emery Precinct  
Republican Precinct  
Committee Officer**

- Candy Warren  
I affirm I am a Republican.
- Eileen Owens  
I affirm I am a Republican.

**Ethel Precinct  
Republican Precinct  
Committee Officer**

- Rachel Anderson  
I affirm I am a Republican.
- Jeanne Hall  
I affirm I am a Republican.

**Evaline West Precinct  
Republican Precinct  
Committee Officer**

- Mike Peterson  
I affirm I am a Republican.
- Dennis A. Carter  
I affirm I am a Republican.

**Ferrier Precinct  
Republican Precinct  
Committee Officer**

- Lacey Clark  
I affirm I am a Republican.
- Ross Nielson  
I affirm I am a Republican.

**Fords Prairie Precinct  
Republican Precinct  
Committee Officer**

- Lynn Richard  
I affirm I am a Republican.
- Sarah Holmes  
I affirm I am a Republican.

**Forest Precinct  
Republican Precinct  
Committee Officer**

- Frank L. Corbin  
I affirm I am a Republican.
- Linda Williams  
I affirm I am a Republican.
- Paul Wilkes  
I affirm I am a Republican.

**Klickitat Precinct  
Republican Precinct  
Committee Officer**

- Marcia Manley  
I affirm I am a Republican.
- Tess Ekdaahl-Johnson  
I affirm I am a Republican.

**Lincoln Creek Precinct  
Republican Precinct  
Committee Officer**

- Julie L. Zielke  
I affirm I am a Republican.
- Maleea Morales  
I affirm I am a Republican.

**Precinct Committee Officer**

**Newaukum Precinct  
Republican Precinct Committee  
Officer**

- Ben Peters  
I affirm I am a Republican.
- Penny Mauel  
I affirm I am a Republican.
- Daniel Sheets  
I affirm I am a Republican.

**Parcuvia Precinct  
Republican Precinct Committee  
Officer**

- Brooke Sund  
I affirm I am a Republican.
- Raymond Schumacher  
I affirm I am a Republican.
- Greg Pulver  
I affirm I am a Republican.

**Prescott Precinct  
Republican Precinct Committee  
Officer**

- Thomas Howsden  
I affirm I am a Republican.
- Margaret K. (Kathy) Chastain  
I affirm I am a Republican.

**Salkum Precinct  
Republican Precinct Committee  
Officer**

- Mitchel N. Townsend  
I affirm I am a Republican.
- Phoebe Atkins  
I affirm I am a Republican.

**Salmon Creek Precinct  
Republican Precinct Committee  
Officer**

- James F. Wallace  
I affirm I am a Republican.
- Stephen Ethridge  
I affirm I am a Republican.

**Salzer Precinct  
Republican Precinct Committee  
Officer**

- Dallas Daarud  
I affirm I am a Republican.
- Suzanne Lee Chastain  
I affirm I am a Republican.

**Sears Precinct  
Republican Precinct Committee  
Officer**

- Joey Laske  
I affirm I am a Republican.
- Janice L Averill  
I affirm I am a Republican.

**Vote Both Sides**

Precinct Committee Officer

**Skookumchuck Precinct  
Republican Precinct Committee  
Officer**

- Chris Town  
I affirm I am a Republican.
- Jami Lund  
I affirm I am a Republican.

**Union Precinct  
Republican Precinct Committee  
Officer**

- Sherri Murphy  
I affirm I am a Republican.
- David Schoonover  
I affirm I am a Republican.

**Centralia #2 Precinct  
Republican Precinct Committee  
Officer**

- Kelley Christensen  
I affirm I am a Republican.
- Colleen Morse  
I affirm I am a Republican.

**Centralia #4 Precinct  
Republican Precinct Committee  
Officer**

- Hannah Ethridge  
I affirm I am a Republican.
- Anthony Ahrens  
I affirm I am a Republican.
- Lindsey Murphy  
I affirm I am a Republican.

**Centralia # 8 Precinct  
Republican Precinct Committee  
Officer**

- Johnny Dunnagan  
I affirm I am a Republican.
- Leah Daarud  
I affirm I am a Republican.

**Centralia #11 Precinct  
Republican Precinct Committee  
Officer**

- Dan Townsend  
I affirm I am a Republican.
- Allison Clark  
I affirm I am a Republican.

**Centraila #12 Precinct  
Republican Precinct Committee  
Officer**

- Karla Miles  
I affirm I am a Republican.
- Douglas Wayne Oertli  
I affirm I am a Republican.

**Chehalis # 5 Precinct  
Republican Precinct Committee  
Officer**

- Karen Laufenberg  
I affirm I am a Republican.
- Franklin Taylor  
I affirm I am a Republican.

Precinct Committee Officer

**Chehalis #6 Precinct  
Republican Precinct  
Committee Officer**

- Fred Rider  
I affirm I am a Republican.
- Robert (Bob) Spahr  
I affirm I am a Republican.
- Sonja Cox  
I affirm I am a Republican.

**Napavine #1 Precinct  
Republican Precinct  
Committee Officer**

- Jaimee Saling  
I affirm I am a Republican.
- Duane A. Crouse  
I affirm I am a Republican.

**Vader Precinct  
Republican Precinct  
Committee Officer**

- Trent Elms  
I affirm I am a Republican.
- Theresa Inez Porter  
I affirm I am a Republican.

Vote Both Sides