



Instructions

How to vote

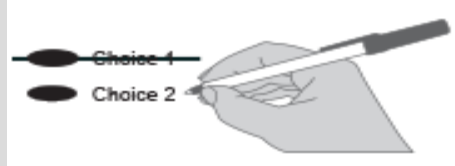


Use a dark blue or black ink pen to completely fill in the oval to the left of your choice.

Vote for one in each race.

If you vote for more than one, no votes will be counted for that race.

If you make a mistake



Draw a line through the entire measure response or candidate's name.

Then you may make another choice.

Who donates to campaigns?

View information on financial contributors that donated to state and local candidates and ballot measure campaigns.

Public Disclosure Commission

www.pdc.wa.gov
Toll Free (800) 601-2828

Note: This is a sample ballot. Your ballot will only contain candidates/measures for which you are eligible to vote. Be sure to follow all instructions on your ballot.

CENTRALIA SCHOOL DISTRICT NO. 401

PROPOSITION NO. 1 CENTRALIA SCHOOL DISTRICT NO. 401

REPLACEMENT EDUCATIONAL PROGRAMS AND OPERATIONS LEVY

The Board of Directors adopted Resolution No. 2021-02 concerning educational funding. This proposition authorizes the District to levy the following excess taxes, to replace an expired levy, on all taxable property within the District, to support the District's educational programs and operations not funded by the state:

<u>Collection Years</u>	<u>Approximate Levy Rate/\$1,000 Assessed Value</u>	<u>Levy Amount</u>
2022	\$1.50	\$4,500,000
2023	\$1.50	\$4,600,000

all as provided in the Resolution. Should this proposition be approved?

- Yes
 No

Thank you for voting!
Please return your ballot by:
April 27, 2021

Sample

This page intentionally left blank.