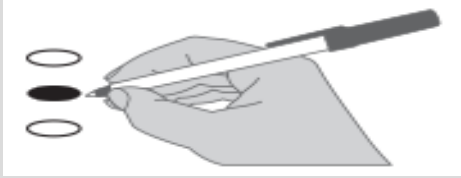




Instructions

How to vote

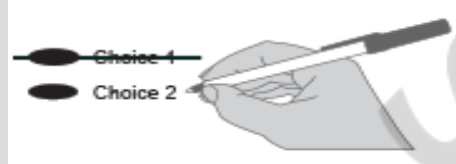


Use a blue or black ink pen to fill in the oval to the left of your choice.

Vote for one in each race.

If you vote for more than one, no votes will be counted for that race.

If you make a mistake



Draw a line through the entire measure response or candidate's name.

Then you may make another choice.

Optional Write-in



To vote for a candidate not listed for that race, fill in the oval to the left of blank space and print the name of the **declared write-in candidate** to the right of the oval.

Who donates to campaigns?

View information on financial contributors for presidential candidates:

Federal Election Commission

www.fec.gov
Toll Free (800) 424-9530

View contributors for state and local campaigns:

Public Disclosure Commission

www.pdc.wa.gov
Toll Free (800) 601-2828

Note: This is a sample ballot. Not all of these candidates or measures will appear on your regular ballot. Your ballot will only contain candidates/measures for which you are eligible to vote. Be sure to follow all instructions on your ballot.

Referendum Measure

Referendum Measure No. 90

The legislature passed Engrossed Substitute Senate Bill 5395 concerning comprehensive sexual health education. This bill would require school districts to adopt or develop, consistent with state standards, comprehensive age-appropriate sexual health education, as defined, for all students, and excuse students if their parents request.

Should this bill be:

- Approved
- Rejected

Advisory Votes

**Advisory Vote No. 32
Engrossed Substitute
Senate Bill 5323**

The legislature imposed, without a vote of the people, a retail sales tax on pass-through charges retail establishments collect for specified carryout bags, costing \$32,000,000 in its first ten years, for government spending.

This tax increase should be:

- Repealed
- Maintained

**Advisory Vote No. 33
Substitute Senate Bill 5628**

The legislature imposed, without a vote of the people, a tax on heavy equipment rentals to consumers by heavy equipment rental property dealers, costing \$103,000,000 in its first ten years, for government spending.

This tax increase should be:

- Repealed
- Maintained

**Advisory Vote No. 34
Engrossed Substitute
Senate Bill 6492**

The legislature increased, without a vote of the people, the business and occupation tax rate for certain businesses, while reducing certain surcharges, costing \$843,000,000 in its first ten years, for government spending.

This tax increase should be:

- Repealed
- Maintained

**Advisory Vote No. 35
Engrossed Senate Bill 6690**

The legislature increased, without a vote of the people, the business and occupation tax on manufacturers of commercial airplanes, including components or tooling, costing \$1,024,000,000 in its first ten years, for government spending.

This tax increase should be:

- Repealed
- Maintained

Proposed Constitutional Amendment

**Engrossed Senate
Joint Resolution No. 8212**

The legislature has proposed a constitutional amendment on investment of public funds. This amendment would allow public money held in a fund for long-term care services and supports to be invested by governments as authorized by state law, including investments in private stocks.

Should this constitutional amendment be:

- Approved
- Rejected

Thank you for voting!
Please return your ballot by:
November 3, 2020

Federal: Partisan Offices

United States President / Vice President

Joseph R Biden / Kamala D. Harris
Democratic Party Nominees

Donald J. Trump / Michael R. Pence
Republican Party Nominees

Jo Jorgensen / Jeremy "Spike" Cohen
Libertarian Party Nominees

Howie Hawkins / Angela Walker
Green Party Nominees

Gloria La Riva / Sunil Freeman
Socialism and Liberation Party Nominees

Alyson Kennedy / Malcolm M. Jarrett
Socialist Workers Party Nominees

READ: Each candidate for President and Vice President is the official nominee of a political party. For other partisan offices, each candidate may state a political party that he or she prefers. A candidate's preference does not imply that the candidate is nominated or endorsed by the party, or that the party approves of or associates with that candidate.

Congressional District 3 U.S. Representative

Jaime Herrera Beutler
(Prefers Republican Party)

Carolyn Long
(Prefers Democratic Party)

State: Partisan Offices

Governor

Jay Inslee
(Prefers Democratic Party)

Loren Culp
(Prefers Republican Party)

Lt. Governor

Denny Heck
(Prefers Democratic Party)

Marko Liias
(Prefers Democratic Party)

Secretary of State

Kim Wyman
(Prefers Republican Party)

Gael Tarleton
(Prefers Democratic Party)

State Treasurer

Mike Pellicciotti
(Prefers Democratic Party)

Duane A. Davidson
(Prefers Republican Party)

State Auditor

Pat (Patrice) McCarthy
(Prefers Democratic Party)

Chris Leyba
(Prefers Republican Party)

Attorney General

Bob Ferguson
(Prefers Democratic Party)

Matt Larkin
(Prefers Republican Party)

Commissioner of Public Lands

Hilary Franz
(Prefers Democratic Party)

Sue Kuehl Pederson
(Prefers Republican Party)

State: Nonpartisan Office

Superintendent of Public Instruction

Chris Reykdal

Maia Espinoza

State: Partisan Offices

Insurance Commissioner

Mike Kreidler
(Prefers Democratic Party)

Chirayu Avinash Patel
(Prefers Republican Party)

Legislative District 19 State Senator

Dean Takko
(Prefers Democratic Party)

Jeff Wilson
(Prefers Republican Party)

Legislative District 19 State Representative Pos. 1

Jim Walsh
(Prefers Republican Party)

Marianna Everson
(Prefers Democratic Party)

Legislative District 19 State Representative Pos. 2

Joel McEntire
(Prefers Republican Party)

Brian E. Blake
(Prefers Democratic Party)

Legislative District 20 State Senator

John Braun
(Prefers Republican Party)

Legislative District 20 State Representative Pos. 1

Peter Abbarno
(Prefers Republican Party)

Timothy Zahn
(Prefers Democratic Party)

Legislative District 20 State Representative Pos. 2

Ed Orcutt
(Prefers Republican Party)

Will Rollet
(Prefers Democratic Party)

County: Partisan Offices

Lewis County Commissioner District 1

Sean Swope
(Prefers Republican Party)

Edna J. Fund
(Prefers Republican Party)

Lewis County Commissioner District 2

Lindsey Remund Pollock
(Prefers Republican Party)

Bobby Jackson
(Prefers Republican Party)

Judicial: Nonpartisan Offices

Supreme Court Justice Position 3 6 Year Short & Full Term

Dave Larson

Raquel Montoya-Lewis

Supreme Court Justice Position 4

Charles W. Johnson

Supreme Court Justice Position 6 2 Year Unexpired Term

Richard S. Serns

G. Helen Whitener

Supreme Court Justice Position 7

Debra L. Stephens

Lewis County Superior Court Judge Position 1

J. Andrew Toynbee

Lewis County Superior Court Judge Position 2

James W. Lawler

Lewis County Superior Court Judge Position 3

Joely O'Rourke

**Public Utility District No. 1:
Nonpartisan Offices**

**PUD Commissioner
District 1**

- Ben Kostick
 Michael Kelly

**PUD Commissioner
District 2**
4 Year Unexpired Term

- Ed Rothlin

Local Measures

LEWIS COUNTY FIRE DISTRICT 17

**PROPOSITION 1
SIX YEAR EMS LEVY**

The Board of Commissioners of Lewis County Fire Protection District 17 (Big Creek) propose a six-year EMS renewal levy reauthorizing the existing levy rate. If Passed, Proposition 1 would permit the district to renew the EMS Levy, beginning collection in 2021 and extending for six years, for regular property tax levy not to exceed \$.50 per \$1,000.00 of assessed valuation.

Should Proposition No. 1 be approved?

- Yes
 No

LEWIS COUNTY FIRE DISTRICT 17

**PROPOSITION 2
SIX YEAR LEVY LID LIFT**

The Board of Commissioners of Lewis County Fire Protection District 17 (Big Creek) proposes a six-year levy lift reauthorizing the previous tax levy rate. If Passed, Proposition 2 would permit the district to maintain the 2020 levy rates, beginning collection in 2021 for six additional years, for regular property tax not to exceed \$1.00 per \$1000.00 of assessed valuation.

Should Proposition No. 2 be approved?

- Yes
 No

Sample