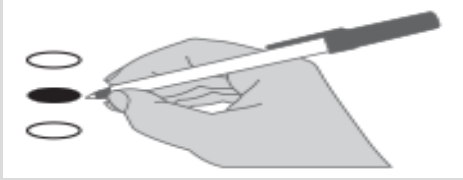




### Instructions

#### How to vote



Use a blue or black ink pen to fill in the oval to the left of your choice.

Vote for one in each race.

If you vote for more than one, no votes will be counted for that race.

#### If you make a mistake



Draw a line through the entire measure response or candidate's name.

Then you may make another choice.

#### Optional Write-in



To vote for a candidate not listed for that race, fill in the oval to the left of the line and print the name of the candidate.

#### Who donates to campaigns?

View information on financial contributors for presidential candidates:

**Federal Election Commission**  
[www.fec.gov](http://www.fec.gov)  
Toll Free (800) 424-9530

View contributors for state and local campaigns:

**Public Disclosure Commission**  
[www.pdc.wa.gov](http://www.pdc.wa.gov)  
Toll Free (800) 601-2828

**Note:** This is a sample ballot. Not all of these candidates or measures will appear on your regular ballot. Your ballot will only contain candidates/measures for which you are eligible to vote. Be sure to follow all instructions on your ballot.

**READ: Each candidate for partisan office may state a political party that he or she prefers. A candidate's preference does not imply that the candidate is nominated or endorsed by the party, or that the party approves of or associates with that candidate.**

#### Congressional District 3 U.S. Representative Partisan Office

- Martin D. Hash  
(States No Party Preference)
- Davy Ray  
(Prefers Democratic Party)
- Carolyn Long  
(Prefers Democratic Party)
- Devin C. Gray  
(Prefers Democrat Party)
- Jaime Herrera Beutler  
(Prefers Republican Party)
- 

#### Governor Partisan Office

- Alex Tsimerman  
(Prefers StandupAmerica Party)
- Phil Fortunato  
(Prefers Republican Party)
- Ryan Ryals  
(Prefers Unaffiliated Party)
- Leon Aaron Lawson  
(Prefers Trump Republican Party)
- Henry Clay Dennison  
(Prefers Socialist Workers Party)
- Tim Eyman  
(Prefers Republican Party)
- Liz Hallock  
(Prefers Green Party)
- Goodspacequy  
(Prefers Trump Republican Party)
- Omari Tahir Garrett  
(Prefers Democrat Party)
- Don L. Rivers  
(Prefers Democratic Party)
- Martin L. 'Iceman' Wheeler  
(Prefers Republican Party)
- Raul Garcia  
(Prefers Republican Party)
- Tylor Grow  
(Prefers Republican Party)
- Winston Wilkes  
(Prefers Propertarianist Party)
- Brian R. Weed  
(States No Party Preference)
- Thor Amundson  
(Prefers Independent Party)
- Gene Hart  
(Prefers Democratic Party)
- William (Bill) Miller  
(Prefers American Patriot Party)
- Matthew Murray  
(Prefers Republican Party)
- Dylan B. Nails  
(Prefers Independent Party)
- Cameron M. Vessey  
(States No Party Preference)
- David W. Blomstrom  
(Prefers Fifth Republic Party)
- Anton Sakharov  
(Prefers Trump Republican Party)
- Craig Campbell  
(States No Party Preference)
- Nate Herzog  
(Prefers Pre2016 Republican Party)
- Cregan M. Newhouse  
(States No Party Preference)
- Ian Gonzales  
(Prefers Republican Party)
- Cairo D'Almeida  
(Prefers Democratic Party)
- Elaina J. Gonzalez  
(Prefers Independent Party)
- Jay Inslee  
(Prefers Democratic Party)
- Joshua Freed  
(Prefers Republican Party)
- David Voltz  
(Prefers Cascadia Labour Party)
- Joshua Wolf  
(Prefers New-Liberty Party)
- Loren Culp  
(Prefers Republican Party)
- Richard L. Carpenter  
(Prefers Republican Party)
- Bill Hirt  
(Prefers Republican Party)
-

**Lt. Governor**  
Partisan Office

- Joseph Brumbles  
(Prefers Republican Party)
- Jared Frerichs  
(Prefers Libertarian Party)
- Ann Davison Sattler  
(Prefers Republican Party)
- James R. Rafferty  
(Prefers Democratic Party)
- Marko Liias  
(Prefers Democratic Party)
- Matt Seymour  
(Prefers Libertarian Party)
- Michelle Jasmer  
(Prefers Democratic Party)
- Bill Penor  
(Prefers Republican Party)
- Richard (Dick) Muri  
(Prefers Republican Party)
- Denny Heck  
(Prefers Democratic Party)
- Marty McClendon  
(Prefers Republican Party)
- 

**Secretary of State**  
Partisan Office

- Ed Minger  
(Prefers Independent Party)
- Gentry Lange  
(Prefers Progressive Party)
- Kim Wyman  
(Prefers Republican Party)
- Gael Tarleton  
(Prefers Democratic Party)
- 

**State Treasurer**  
Partisan Office

- Duane A. Davidson  
(Prefers Republican Party)
- Mike Pellicciotti  
(Prefers Democratic Party)
- 

**State Auditor**  
Partisan Office

- Joshua Casey  
(Prefers Democratic Party)
- Chris Leyba  
(Prefers Republican Party)
- Pat (Patrice) McCarthy  
(Prefers Democratic Party)
- 

**Attorney General**  
Partisan Office

- Matt Larkin  
(Prefers Republican Party)
- Mike Vaska  
(Prefers GOP Party)
- Brett Rogers  
(Prefers Republican Party)
- Bob Ferguson  
(Prefers Democratic Party)
- 

**Commissioner of Public Lands**  
Partisan Office

- Cameron Whitney  
(Prefers Republican Party)
- Steve Sharon  
(Prefers Republican Party)
- Hilary Franz  
(Prefers Democratic Party)
- Kelsey Reyes  
(Prefers Libertarian Party)
- Maryam Abasbarzy  
(Prefers Republican Party)
- Sue Kuehl Pederson  
(Prefers Republican Party)
- Frank Wallbrown  
(Prefers Democratic Party)
- 

**Superintendent of Public Instruction**  
Nonpartisan Office

- Ron Higgins
- Maia Espinoza
- Stan Lippmann
- David Spring
- Dennis Wick
- Chris Reykdal
- 

**Insurance Commissioner**  
Partisan Office

- Anthony Welti  
(Prefers Libertarian Party)
- Chirayu Avinash Patel  
(Prefers Republican Party)
- Mike Kreidler  
(Prefers Democratic Party)
- 

**Legislative District 19**  
**State Senator**  
Partisan Office

- Wes Cormier  
(Prefers Republican Party)
- Jeff Wilson  
(Prefers Republican Party)
- Dean Takko  
(Prefers Democratic Party)
- 

**Legislative District 19**  
**State Representative Pos. 1**  
Partisan Office

- Jim Walsh  
(Prefers Republican Party)
- Marianna Everson  
(Prefers Democratic Party)
- Clint Bryson  
(Prefers Democratic Party)
- 

**Legislative District 19**  
**State Representative Pos. 2**  
Partisan Office

- Joel McEntire  
(Prefers Republican Party)
- Brian E. Blake  
(Prefers Democratic Party)
- 

**Legislative District 20**  
**State Senator**  
Partisan Office

- John Braun  
(Prefers Republican Party)
- 

**Legislative District 20**  
**State Representative Pos. 1**  
Partisan Office

- Timothy Zahn  
(Prefers Democratic Party)
- Kurtis Engle  
(States No Party Preference)
- Peter Abbarno  
(Prefers Republican Party)
- Brian Lange  
(Prefers Republican Party)
- 

**Legislative District 20**  
**State Representative Pos. 2**  
Partisan Office

- Will Rollet  
(Prefers Democratic Party)
- Ed Orcutt  
(Prefers Republican Party)
- 

**Lewis County Commissioner**  
**District 1**  
Partisan Office

- Sean Swope  
(Prefers Republican Party)
- Edna J. Fund  
(Prefers Republican Party)
- 

**Lewis County Commissioner**  
**District 2**  
Partisan Office

- Bobby Jackson  
(Prefers Republican Party)
- Lindsey Remund Pollock  
(Prefers Republican Party)
- 

**Lewis County PUD**  
**Commissioner, District 1**  
Nonpartisan Office

- Steve Grega
- Michael Kelly
- Ben Kostick
-

**CENTRALIA SCHOOL DIST NO. 401**

**PROPOSITION NO. 1  
REPLACEMENT EDUCATIONAL  
PROGRAMS AND OPERATIONS  
LEVY**

The Board of Directors adopted Resolution No. 2020-09 concerning educational funding. This proposition authorizes the District to levy the following excess taxes, to replace an expiring levy, on all taxable property within the District, to support the District's educational programs and operations not funded by the state:

Collection Years	Approximate Levy Rate per \$1,000 Assessed Value	Levy Amount
2021	\$2.00	\$5,300,000
2022	\$2.00	\$5,400,000

all as provided in the Resolution.

Should this proposition be approved?

- Yes
- No

**LEWIS COUNTY FIRE DISTRICT 15**

**PROPOSITION NO. 1  
EMERGENCY MEDICAL SERVICES  
PROPERTY TAX LEVY**

Shall Lewis County Fire District 15 be authorized to continue funding emergency medical services for its citizens with a regular property tax levy of \$.50 or less per \$1,000.00 of assessed valuation for a period of six consecutive years to be collected beginning in 2021?

- Yes
- No

**For this office only:** In order to vote for precinct committee officer, a partisan office, you must affirm that you are a Democrat or a Republican and may vote only for one candidate from the party you select. Your vote for a candidate affirms your affiliation with the same party as the candidate. This preference is private and will not be matched to your name or shared.

**LEWIS COUNTY FIRE DISTRICT 3**

**PROPOSITION 1  
SIX YEAR LEVY LID LIFT**

The Board of Commissioners of Lewis County Fire Protection District 3 (Mossyrock) proposes a levy lid lift reauthorizing previously existing EMS assessed value. The District currently is assessing the levy rate at .3679 per thousand dollars of assessed value of property. If passed Proposition 1 would permit the District to increase the EMS levy, beginning collecting in 2021 for six years, for EMS property tax not to exceed .50 cents per \$1,000.00 of assessed valuation, thereby lifting the revenue limitations in Chapter 84.55.050 RCW.

Should Proposition 1 be approved?

- Yes
- No

**Alpha  
Precinct Committee Officer  
Republican PCO**

- Yvonne Ensley - Rep  
I affirm I am a Republican
- Marty Hayes - Rep  
I affirm I am a Republican

**Cowlitz  
Precinct Committee Officer  
Republican PCO**

- Carol Kearns - Rep  
I affirm I am a Republican
- Elizabeth Rohr - Rep  
I affirm I am a Republican

**Crego  
Precinct Committee Officer  
Republican PCO**

- Douglas Peterson - Rep  
I affirm I am a Republican
- John Wickert - Rep  
I affirm I am a Republican

**Sears  
Precinct Committee Officer  
Republican PCO**

- Josiah Beresford - Rep  
I affirm I am a Republican
- Janice L. Averill - Rep  
I affirm I am a Republican

Sample