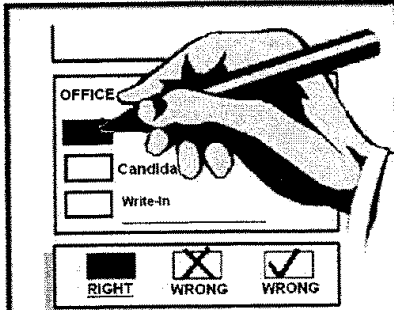


SAMPLE BALLOT
Lewis County, Washington
Special Election
May 20, 2008

Precinct *Sample*

Instructions:



**WHITE PASS SCHOOL DIST #303
BONDS FOR CONSTRUCTION AND
RENOVATION OF SCHOOL FACILITIES**

The Board of Directors of White Pass School District No. 303, adopted Resolution No. 02-08, concerning a proposition to finance construction and renovation of school facilities. This proposition would authorize the District to construct a new junior-senior high school to replace the existing White Pass Junior-Senior High School, renovate and expand White Pass Elementary School and make health and safety improvements; issue no more than \$18,500,000 of general obligation bonds maturing within 20 years; and levy annual excess property taxes to repay the bonds, all as provided in Resolution No. 02-08. Should this proposition be:

- Approved
- Rejected

Use a **BLACK** or **BLUE** ink pen to mark your choices on the ballot. Completely fill in the box provided.

If you incorrectly mark your ballot, correct it by crossing out the incorrect vote with an "X" and filling in the correct box completely. Unless specifically allowed by law, more than one vote for an office or ballot measure will be an overvote and no votes for that office or ballot measure will be counted.

If your original ballot is damaged or lost, you may get a replacement ballot by calling (360) 740-1278 or 740-1164 or toll free in Lewis County (800) 562-6130 ext 1278.

Do not sign or make any mark of identification on the Official Ballot. Place your voted ballot in the Secrecy Envelope and follow instructions on the lavender envelope to return your ballot. Attach sufficient first class postage to the envelope and mail so that it will be **POSTMARKED** the day of the election or sooner. Or you may deposit it in the drop box located in the Auditor's office at 351 NW North Street, Chehalis. Office hours are 8 AM to 5 PM Monday through Friday and on Election Day from 7 AM to 8 PM.

If you have changed your permanent residence address, call the number above to ensure the ballot you receive in future elections contains the races and issues for your resident address. If you have any questions about your eligibility to vote in this election, please contact this office.



10000010100014

00000001102

1213031173

