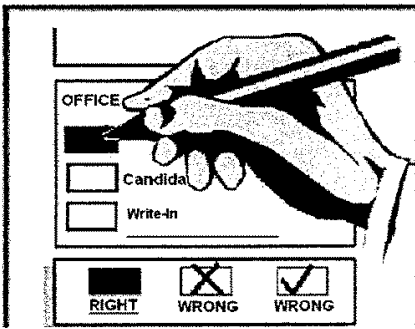


**SAMPLE BALLOT**  
**Lewis County, Washington**  
**Special Election**  
**February 03, 2009**

**Precinct 1 SAMPLE**



**TIMBERLAND REGIONAL LIBRARY DISTRICT**  
**LEVY LID LIFT**

The Timberland Regional Library Board of Trustees adopted Resolution No. 08-05 proposing to increase the District's regular property tax levy. This proposition would restore the District's regular property tax levy for maintenance and operations to a maximum of \$.50 per \$1,000 assessed valuation for collection in 2010 and to establish the newly approved maximum levy amount as the basis for calculating future property tax levies. Should this proposition be:

- Approved  
 Rejected

**WHITE PASS SCHOOL DIST NO. 303**  
**MAINTENANCE AND OPERATION LEVY**

The White Pass School District No. 303 adopted Resolution No. 17-08 concerning a proposition to replace an expiring levy. This proposition would authorize the District to levy the following rates for General Fund maintenance and operation expenses on all taxable property within the District:

Collection Year	Approximate Levy Rate/\$1,000 Assessed Value	Levy Amount Raised
2010	\$1.94	\$964,460
2011	\$1.94	\$964,460
2012	\$1.94	\$964,460
2013	\$1.94	\$964,460

Should this proposition be approved?:

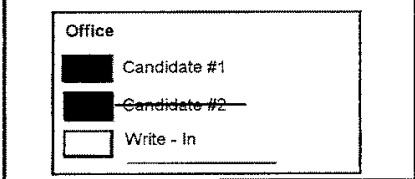
- Yes  
 No

**Instructions:**

Use a BLACK or BLUE ink pen only. Completely fill in the box provided to the left of your choice. Make no stray marks on the ballot. Do not use inks that soak through the paper. Unless specifically allowed by law, more than one vote for an office or ballot measure will be an overvote and no votes for that office or ballot measure will be counted. If a voter has signed or otherwise identified himself or herself on a ballot, the ballot will not be counted. If the original ballot is destroyed, spoiled or lost, a replacement ballot may be obtained by calling (360) 740-1278 or toll free within Lewis County (800) 562-6130 ext 1278. Follow instructions on the lavender envelope to return ballot. Mail or deposit it in the drop box located in the Auditor's office at 351 NW North St, Chehalis, from 8 AM to 5 PM Monday-Friday and on Election Day from 7 AM to 8 PM. Accessible voting equipment will be available 20 days prior to election day. If you have changed your permanent residence address, call this office to ensure the ballot you receive in future elections contains the races and issues for your resident address. If you have any questions about your eligibility to vote in this election, please contact this office.

**To Correct a Mistake:**

Draw a line through the entire candidate's name like shown below. You then have the option of making another choice.



10000010100014

000000001102

1493031179