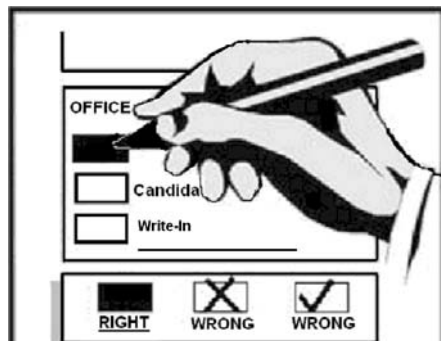


OFFICIAL BALLOT
Lewis County, Washington
Presidential Primary Election
February 19, 2008

Precinct **1 SAMPLE**

Instructions:



Use a **BLACK** or **BLUE** ink pen to mark your choices on the ballot. Completely fill in the box provided. If you incorrectly mark your ballot, correct it by crossing out the incorrect vote with an "X" and filling in the correct box completely. To vote for a write-in candidate, fill in the box next to the word "Write-in" and write the name on the line provided. Unless specifically allowed by law, more than one vote for an office or ballot measure will be an overvote and no votes for that office or ballot measure will be counted. If your original ballot is damaged or lost, you may get a replacement ballot by calling (360) 740-1278 or 740-1164 or toll free in Lewis County (800) 562-6130 ext 1278. Do not sign or make any mark of identification on the Official Ballot. Place your voted ballot in the Secrecy Envelope and follow instructions on the lavender envelope to return your ballot. Mail your ballot or deposit it in the drop box located in the Auditor's office at 351 NW North Street, Chehalis. Office hours are 8 AM to 5 PM Monday through Friday and on Election Day from 7 AM to 8 PM. If you have changed your permanent residence address, call the number above to ensure the ballot you receive in future elections contains the races and issues for your resident address. If you have any questions about your eligibility to vote in this election, please contact this office.

This ballot contains major political party candidates for the partisan offices and non partisan ballot measures. For partisan offices you must vote for candidates of only one political party. Regardless of whether you vote for partisan offices, you may vote for the ballot measures. 1. Select one political party oath on the lavender envelope. If you do not select a party, or if you select more than one party, your vote for partisan offices will not be counted. 2. Vote only for candidates of that party. Votes for another party's candidates will not be counted. 3. Vote for non partisan ballot measures if applicable. These votes will be counted even if you do not select a political party oath.

DEMOCRATIC PARTY

Federal Offices

Democratic Candidates for President of the United States
 Vote For One

- Joe Biden
- Hillary Clinton
- Christopher J. Dodd
- John Edwards
- Mike Gravel
- Dennis J. Kucinich
- Barack Obama
- Bill Richardson
- Write-in

REPUBLICAN PARTY

Federal Offices

Republican Candidates for President of the United States
 Vote For One

- Rudy Giuliani
- Mike Huckabee
- Duncan Hunter
- Alan Keyes
- John McCain
- Ron Paul
- Mitt Romney
- Fred Thompson
- Write-in

CASTLE ROCK SCHOOL DIST
#401 REPLACEMENT M & O LEVY

The Board of Directors of Castle Rock School District No. 401 adopted Resolution No. 2007-83, concerning a proposition to finance maintenance and operation expenses. This proposition would authorize the District to meet the educational needs of its students by levying the following excess taxes, in place of an expiring levy, on all taxable property with the District, for support of the District's General Fund maintenance and operation expenses:

Collection Year	Approximate Rate/\$1,000 Assessed Value	Levy Amount
2009	\$2.75	\$1,900,000
2010	\$2.70	\$1,900,000
2011	\$2.60	\$1,900,000
2012	\$2.50	\$1,900,000

all as provided in Resolution No. 2007-83. Should this proposition be approved?

- Yes
- No

500000001140 Sam ple Ballot 2008010100011

Sam ple Ballot

1113031157

OFFICIAL BALLOT
Lewis County, Washington
Presidential Primary Election
February 19, 2008

Precinct **1 SAMPLE**

CENTRALIA SCHOOL DIST #401
EDUCATIONAL MAINTENANCE
AND OPERATIONS LEVY

To replace an expiring levy, the Centralia School District No. 401 Board of Directors adopted Resolution #2007-28 concerning educational funding. This proposition authorizes the District to levy the following rates, on all taxable property within the District, to support the District's educational maintenance and operations:

Collection Year	Approximate Levy Rate/\$1,000 Assessed Value	Levy Amount
2009	\$2.14	\$4,503,000
2010	\$2.16	\$4,638,000

all as provided in Resolution No. 06-07:5.
 Should this proposition be approved?

Yes
 No

CHEHALIS SCHOOL DIST #302
REPLACEMENT LEVIES FOR
SCHOOL OPERATIONS

To maintain current programs, the Chehalis School District No. 302 adopted Resolution No. 07-08-005 concerning a proposition to replace an expiring levy for operations. This proposition would authorize the District to levy the following amounts at estimated descending rates for General Fund expenses on all taxable property with the District:

Collection Year	Approximate Levy Rate/\$1,000 Assessed Value	Levy Amount
2009	\$2.18	\$3,520,000
2010	\$2.17	\$3,650,000
2011	\$2.16	\$3,780,000
2012	\$2.15	\$3,900,000

Should this proposition be approved?

Yes
 No

MORTON SCHOOL DIST #214
SCHOOL PROGRAM
REPLACEMENT LEVY

The Board of Directors of Morton School District No. 214 adopted Resolution No. 2007-2008/03 concerning a proposition to finance maintenance and operation expenses. This proposition would authorize the District to levy the following taxes, in excess of regular tax levies and in place of an expiring levy, upon all taxable property within the District for support of the District's General Fund educational maintenance and operation expenses:

Collection Year	Approximate Levy Rate/\$1,000 Assessed Value	Levy Amount
2009	\$2.31	\$615,000
2010	\$2.31	\$615,000
2011	\$2.49	\$665,000
2012	\$2.49	\$665,000

All as provided in Resolution #2007-2008/03.
 Should this proposition be approved?

Yes
 No

MOSSYROCK SCHOOL DIST #206
SCHOOL MAINTENANCE AND
OPERATION LEVY

The Mossyrock School District No. 206 Board of Directors adopted Resolution No. 07/08-9 concerning a proposition to finance maintenance and operation expenses. This proposition would authorize the District to levy the following excess taxes, in place of an expiring levy, on all taxable property within the District, for the support of the District's General Fund educational maintenance and operation expenses:

Collection Year	Approximate Levy Rate/\$1,000 Assessed Value	Levy Amount
2009	\$1.64	\$550,000
2010	\$1.64	\$550,000

all as provided in Resolution No. 07/08-9.
 Should this proposition be approved?

Yes
 No

NAPAVINE SCHOOL DIST #14
SCHOOL REPLACEMENT
MAINTENANCE AND
OPERATION LEVY

The Napavine School District No.14 adopted Resolution No. 07-08-04 concerning a proposition to replace an expiring levy. This proposition would authorize the District to levy the following rates, in place of expiring levy, for educational maintenance and operation expenses on all taxable property within the District:

Collection Year	Approximate Levy Rate/\$1,000 Assessed Value	Levy Amount
2009	\$2.36	\$600,000
2010	\$2.36	\$600,000

Should this proposition be approved?

Yes
 No

OAKVILLE SCHOOL DIST #400
MAINTENANCE AND OPERATION
REPLACEMENT LEVY

The Board of Directors of Oakville School District No. 400 adopted Resolution No. 01-2007-02 concerning a proposition to finance maintenance and operation expenses. This proposition would authorize the District to meet the educational needs of its students by levying the following excess taxes, in place of an expiring levy, on all taxable property within the District, for support of the District's General Fund educational maintenance and operation expenses:

Collection Year	Approximate Levy Rate/\$1,000 Assessed Value	Levy Amount
2009	\$2.68	\$356,400.00
2010	\$2.68	\$356,400.00

All as provided in Resolution No. 01-2007-02.
 Should this proposition be approved?

Yes
 No

500000001237 Sam ple Ballot 12000010200018

Sam ple Ballot

1113031157

OFFICIAL BALLOT
Lewis County, Washington
Presidential Primary Election
February 19, 2008

Precinct 1 SAMPLE

ONALASKA SCHOOL DIST #300
SCHOOL REPLACEMENT
MAINTENANCE AND OPERATION
LEVY

The Onalaska School District No. 300 adopted Resolution No. 07-08-04 concerning a proposition to replace an expiring levy. This proposition would authorize the District to levy the following rates, in place of expiring levy, for educational maintenance and operation expenses on all taxable property within the District:

Collection Year	Approximate Levy Rate/\$1,000 Assessed Value	Levy Amount
2009	\$1.80	\$970,000
2010	\$1.80	\$970,000
2011	\$1.80	\$970,000

Should this proposition be approved?

- Yes
 No

PE ELL SCHOOL DIST #301
REPLACEMENT EDUCATIONAL
MAINTENANCE AND OPERATION
LEVY

The Board of Directors of Pe Ell School District No. 301 adopted Resolution No. 2007-07, concerning a proposition to replace an expiring levy. This proposition would authorize the District to meet the educational needs of its students by levying the following excess taxes, in place of an expiring levy, on all taxable property within the District, to finance General Fund educational maintenance and operation expenses:

Collection Year	Approximate Levy Rate/\$1,000 Assessed Value	Levy Amount
2009	\$1.81	\$370,000
2010	\$1.80	\$370,000

all as provided in Resolution No. 2007-07. Should this proposition be approved?

- Yes
 No

ROCHESTER SCHOOL DIST #401
EDUCATIONAL MAINTENANCE
AND OPERATIONS LEVY

The Board of Directors of Rochester School District No.401 adopted Resolution No. 08-07 concerning a proposition to levy property tax. Upon the expiration of the current maintenance and operation levy, the proposition would authorize the following taxes for purposes of operation and maintenance in excess of all regular property tax levies, upon all taxable property within Rochester School District No. 401 for the District's general fund:

Collection Year	Approximate Levy Rate/\$1,000 Assessed Value	Levy Amount
2009	\$2.55	\$3,236,000
2010	\$2.49	\$3,388,000
2011	\$2.46	\$3,578,000
2012	\$2.39	\$3,721,000

Should this proposition be approved?

- Yes
 No

WHITE PASS SCHOOL DIST #303
BONDS FOR CONSTRUCTION
AND RENOVATION OF SCHOOL
FACILITIES

The Board of Directors of White Pass School District No. 303, adopted Resolution No. 09-07, concerning a proposition to finance construction and renovation of school facilities. This proposition would authorize the District to construct a new junior-senior high school to replace the existing White Pass Junior-Senior High School, renovate and expand White Pass Elementary School and make health and safety improvements; issue no more than \$18,500,000 of general obligation bonds maturing within 20 years; and levy annual excess property taxes to repay the bonds, all as provided in Resolution No. 09-07. Should this proposition be:

- Approved
 Rejected

WINLOCK SCHOOL DIST #232
REPLACEMENT MAINTENANCE
AND OPERATION LEVY

The Winlock School District No. 232 adopted Resolution No. 2007-05 concerning a proposition to finance maintenance and operation expenses. This proposition would authorize the District to levy the following excess taxes, in place of an expiring levy, upon all taxable property within the District, for support of the District's General Fund educational maintenance and operation expenses:

Collection Year	Approximate Levy Rate/\$1,000 Assessed Value	Levy Amount
2009	\$1.92	\$550,000
2010	\$1.92	\$550,000

all as provided in Resolution 2007-05. Should this proposition be approved?

- Yes
 No

FIRE DIST #15 - WINLOCK
AUTHORIZING REGULAR TAX
LEVY TO FINANCE EMERGENCY
MEDICAL SERVICES FOR 6 YR

Should the Lewis County Fire Protection District No 15 be authorized to impose a regular property tax levy of \$.25 per thousand dollars of assessed valuation beginning in 2009 and continuing in the succeeding five years for emergency medical services?

- Yes
 No

500000001140 Sam ple Ballot 22000010300010

Sam ple Ballot

1113031157



Sample Ballot22000010400017

500000001334



This page intentionally left blank



1113031157

Sample Ballot