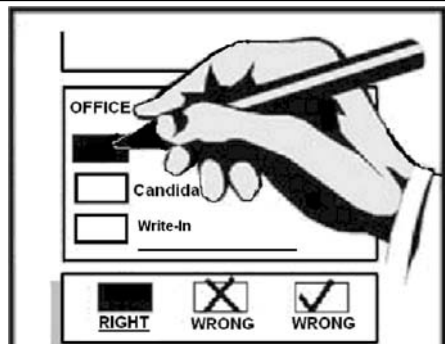


# Vote Both Sides

**SAMPLE BALLOT**  
**State Primary Election**  
**August 19, 2008**

**Lewis County, Washington**

**Precinct 1 Sample**



**READ:** Each candidate for partisan office may state a political party that he or she prefers. A candidate's preference does not imply that the candidate is nominated or endorsed by the party, or that the party approves of or associates with that candidate.

**FEDERAL - PARTISAN OFFICE**

**U.S. Congressional Dist 3 Representative**  
**Vote For One**

- Brian Baird  
(Prefers Democratic Party)
- Cheryl Crist  
(Prefers Democratic Party)
- Michael Delavar  
(Prefers Republican Party)
- Christine Webb  
(Prefers Republican Party)
- Write-in

**STATE - PARTISAN OFFICES**

**Governor**

**Vote For One**

- Dino Rossi  
(Prefers G.O.P. Party)
- Will Baker  
(Prefers Reform Party)
- Christine Gregoire  
(Prefers Democratic Party)
- Duff Badgley  
(Prefers Green Party)
- John W. Aiken, Jr.  
(Prefers Republican Party)
- Christian Pierre Joubert  
(Prefers Democratic Party)
- Christopher A. Tudor  
(States No Party Preference)
- Javier O. Lopez  
(Prefers Republican Party)
- Mohammad Hasan Said  
(States No Party Preference)
- James White  
(Prefers Independent Party)
- Write-in

**Lt. Governor**

**Vote For One**

- Brad Owen  
(Prefers Democratic Party)
- Marcia McCraw  
(Prefers Republican Party)
- Arlene A. Peck  
(Prefers Constitution Party)
- Jim Wiest  
(Prefers G.O.P. Party)
- Randel Bell  
(Prefers Democratic Party)
- Write-in

**Secretary of State**

**Vote For One**

- Sam Reed  
(Prefers Republican Party)
- Mark Greene  
(Prefers Party of Commons Party)
- Jason Osgood  
(Prefers Democratic Party)
- Marilyn Montgomery  
(Prefers Constitution Party)
- Write-in

**State Treasurer**

**Vote For One**

- Allan Martin  
(Prefers Republican Party)
- Jim McIntire  
(Prefers Democratic Party)
- ChangMook Sohn  
(Prefers Democratic Party)
- Write-in

**State Auditor**

**Vote For One**

- Brian Sonntag  
(Prefers Democratic Party)
- Glenn Freeman  
(Prefers Constitution Party)
- J. Richard (Dick) McEntee  
(Prefers Republican Party)
- Write-in

**Attorney General**

**Vote For One**

- John Ladenburg  
(Prefers Democratic Party)
- Rob McKenna  
(Prefers Republican Party)
- Write-in

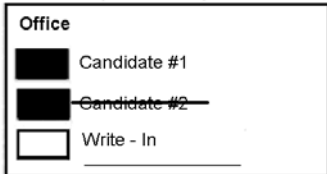
**CONTINUE ON REVERSE SIDE**

**Instructions:**

Use a **BLACK** or **BLUE** pen to mark your choices on the ballot. Completely fill in the box provided. To vote for a write-in candidate, fill in the box next to the word "Write-in" and write the name on the line provided. Unless specifically allowed by law, more than one vote for an office or ballot measure will be an overvote and no votes for that office or ballot measure will be counted. If a voter has signed or otherwise identified himself or herself on a ballot, the ballot will not be counted. If the original ballot is destroyed, spoiled or lost, a replacement ballot may be obtained by calling (360) 740-1278 or toll free in Lewis County (800) 562-6130 ext 1278. Follow instructions on the lavender envelope to return your ballot. Mail or deposit it in the drop box located in the Auditor's office at 351 NW North St, Chehalis, from 8 AM to 5 PM Monday-Friday and on Election Day from 7 AM to 8 PM. Accessable voting equipment will be available 20 days prior to election day. If you have changed your permanent residence address, call this office to ensure the ballot you receive in future elections contains the races and issues for your resident address. If you have any questions about your eligibility to vote in this election, please contact this office.

**To Correct a Mistake:**

Draw a line through the entire candidate's name like shown below. You then have the option of making another choice.



10000010100014

00000012141

1323031113

Vote Both Sides

**SAMPLE BALLOT**  
**State Primary Election**  
**August 19, 2008**

**Lewis County, Washington**

**Precinct 1 Sample**

10000010200021

00000012244

1323031113

**Commissioner of Public Lands**  
**Vote For One**  
 Peter J. Goldmark  
 (Prefers Democratic Party)  
 Doug Sutherland  
 (Prefers Republican Party)  
 Write-in

**STATE - NONPARTISAN OFFICE**

**Superintendent of Public Instruction**  
**Vote For One**  
 John Patterson Blair  
 Don Hansler  
 Randy Dorn  
 David Blomstrom  
 Enid Duncan  
 Teresa (Terry) Bergeson  
 Write-in

**STATE - PARTISAN OFFICES**

**Insurance Commissioner**  
**Vote For One**  
 Mike Kreidler  
 (Prefers Democratic Party)  
 John R. Adams  
 (Prefers Republican Party)  
 Curtis Fackler  
 (States No Party Preference)  
 Write-in

**Legislative District 20 State Senator**  
**Vote For One**  
 Dan Swecker  
 (Prefers Republican Party)  
 Neal Kirby  
 (Prefers Republican Party)  
 Ted Shannon  
 (Prefers Republican Party)  
 Chuck Bojarski  
 (Prefers Democratic Party)  
 Write-in

**Legislative District 20 State Representative Pos 1**  
**Vote For One**  
 Richard DeBolt  
 (Prefers G.O.P. Party)  
 Mike Rechner  
 (Prefers Democratic Party)  
 Write-in

**Legislative District 20 State Representative Pos 2**  
**Vote For One**  
 Gary C. Alexander  
 (Prefers G.O.P. Party)  
 Jim Cutler  
 (Prefers Democratic Party)  
 Write-in

**COUNTY - PARTISAN OFFICE**

**County Commissioner Dist 1**  
**Vote For One**  
 Ron Averill  
 (Prefers Republican Party)  
 Write-in

**County Commissioner Dist 2**  
**Vote For One**  
 Bill Schulte  
 (Prefers Republican Party)  
 John P. Penberth  
 (Prefers Republican Party)  
 Lyle Hojem  
 (Prefers G.O.P. Party)  
 Write-in

**JUDICIAL - NONPARTISAN OFFICES**

**Supreme Court Justice Position 3**  
**Vote For One**  
 Mary Fairhurst  
 Michael J. Bond  
 Write-in

**Supreme Court Justice Position 4**  
**Vote For One**  
 Charles W. Johnson  
 C.F. (Frank) Vulliet  
 James M. Beecher  
 Write-in

**Supreme Court Justice Position 7**  
**Short & Full Term Vote For One**  
 Debra L. Stephens  
 Write-in

**Superior Court Judge Dept 1**  
**Vote For One**  
 Nelson E. Hunt  
 Write-in

**Superior Court Judge Dept 2**  
**Vote For One**  
 Jim Lawler  
 Write-in

**Superior Court Judge Dept 3**  
**Vote For One**  
 Richard L. Brosey  
 Write-in

**Riverside Fire Authority**  
**Emergency Medical Service Regular Property Tax Levy**  
 The Board of the Riverside Fire Authority adopted Resolution No. 08-13, providing for an EMS levy. Shall the Riverside Fire Authority be authorized to impose a regular property tax levy of up to fifty (50) cents per thousand dollars of assessed valuation for each of ten consecutive years to maintain paramedic services, with collection beginning in 2009?  
 Yes  
 No

**ELECTION OF POLITICAL PARTY PRECINCT COMMITTEE OFFICER**

**Precinct Committee Officer is a position in each major political party. For this office only: If you consider yourself a Democrat or Republican, you may vote for a candidate of that party.**

**Precinct Committee Officer**  
**Vote For One. For a write-in candidate, include party.**  
 John Doe  
 Democratic Party Candidate  
 Sam Smith  
 Democratic Party Candidate