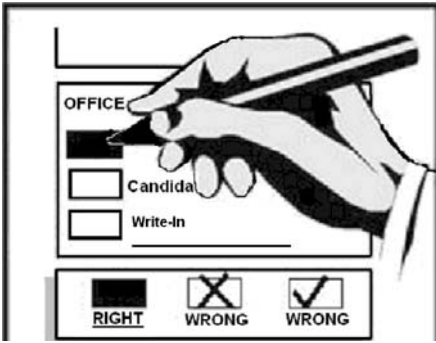


SAMPLE BALLOT
Lewis County, Washington
Special Election
May 19, 2009

Precinct *Sample*

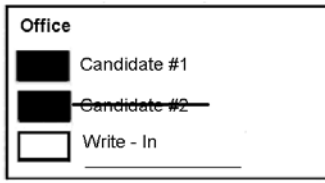


Instructions:

Use a **BLACK** or **BLUE** ink pen only. Completely fill in the box provided to the left of your choice. Make no stray marks on the ballot. Do not use inks that soak through the paper. Unless specifically allowed by law, more than one vote for that office or ballot measure will be an overvote and no votes for that office or ballot measure will be counted. If a voter has signed or otherwise identified himself or herself on a ballot, the ballot will not be counted. If the original ballot is destroyed, spoiled or lost, a replacement ballot may be obtained by calling (360) 740-1278 or toll free within Lewis County (800) 562-6130 ext 1278. Follow instructions on the lavender envelope to return ballot. Mail or deposit it in the drop box located in the Auditor's office at 351 NW North St, Chehalis, from 8 AM to 5 PM Monday-Friday and on Election Day from 7 AM to 8 PM. Accessible voting equipment will be available 20 days prior to election day. If you have changed your permanent residence address, call this office to ensure the ballot you receive in future elections contains the races and issues for your resident address. If you have any questions about your eligibility to vote in this election, please contact this office.

To Correct a Mistake:

Draw a line through the entire candidate's name like shown below. You then have the option of making another choice.



**EVALINE SCHOOL DISTRICT NO. 36
REPLACEMENT MAINTENANCE
AND OPERATION LEVY**

The Board of Directors of the Evaline School District No. 36 adopted Resolution No. 2008-09:1, concerning a proposition to finance maintenance and operation expenses. This proposition would authorize the district to levy the following excess taxes in place of an expiring levy, upon all taxable property within the Evaline School District, for support of the District's General Fund educational maintenance and operation expenses:

Levy/ Collection Years	Approx. Levy Rate Per \$1,000.00 Assessed Value	Levy Amount
2010/2011	\$.94	\$190,000.00
2011/2012	\$.94	\$190,000.00

All as provided in Resolution No. 2008-09:1. Should this proposition be approved:

- Yes
 No

**RIVERSIDE FIRE AUTHORITY
EMERGENCY MEDICAL SERVICE REGULAR
PROPERTY TAX LEVY**

The Board of the Riverside Fire Authority adopted Resolution No. 09-02, providing for an EMS levy. Shall the Riverside Fire Authority be authorized to impose a regular property tax levy of up to fifty (50) cents per thousand dollars of assessed valuation for each of six consecutive years to maintain paramedic services, with collection beginning in 2010?

- Yes
 No

**FIRE PROTECTION DISTRICT NO. 2-TOLEDO
REPLACEMENT OF EXPIRING EMERGENCY
MEDICAL SERVICES LEVY**

The Board of Fire Commissioners of Lewis County Fire Protection District No. 2 has adopted Resolutions 2009-01-02 providing for replacement of an emergency medical services levy. In place of a levy expiring in 2009, shall the Lewis County Fire Protection District No. 2 (Toledo) be authorized to continue a regular property tax levy of up to \$.50 per thousand dollars of assessed valuation for each of six consecutive years beginning in 2010 for providing Emergency Medical Services?

- Yes
 No

10000010100014

500000006184

1613031140



10000010200021

500000006378



This page intentionally left blank



1613031140