



12000010100011

Sample Ballot

200000013183

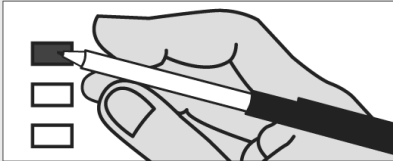


SAMPLE BALLOT
Lewis County, Washington
State General Election
November 02, 2010

Precinct *SAMPLE*

Instructions

How to vote



Use a dark blue or black ink pen to completely fill in the box to the left of your choice.

Do not use colored ink pens that soak through the ballot.

Vote for one in each race.

If you vote for more than one, no votes will be counted for that race.

If you make a mistake

Draw a line through the entire measure response or candidate's name.

Then you may make another choice.

Optional write-in

To vote for a candidate not listed for that race, fill in the box to the left of "write-in" and print the name on the line.

Lewis County Elections

For a replacement ballot, or for information on Accessible Voting Units (available 20 days before Election Day), please call us at: (360) 740-1278 or toll-free within Lewis County: (800) 562-6130 ext 1278

Start voting here

STATE MEASURES

PROPOSED BY INITIATIVE PETITION

Initiative Measure No. 1053
Initiative Measure No. 1053 concerns tax and fee increases imposed by state government. This measure would restate existing statutory requirements that legislative actions raising taxes must be approved by two-thirds legislative majorities or receive voter approval, and that new or increased fees require majority legislative approval. Should this measure be enacted into law?

☐ Yes
☐ No

Initiative Measure No. 1082
Initiative Measure No. 1082 concerns industrial insurance. This measure would authorize employers to purchase private industrial insurance beginning July 1, 2012; direct the legislature to enact conforming legislation by March 1, 2012; and eliminate the worker-paid share of medical-benefit premiums. Should this measure be enacted into law?

☐ Yes
☐ No

Initiative Measure No. 1098
Initiative Measure No. 1098 concerns establishing a state income tax and reducing other taxes. This measure would tax "adjusted gross income" above \$200,000 (individuals) and \$400,000 (joint-filers), reduce state property tax levies, reduce certain business and occupation taxes, and direct any increased revenues to education and health. Should this measure be enacted into law?

☐ Yes
☐ No

Initiative Measure No. 1100
Initiative Measure No. 1100 concerns liquor (beer, wine and spirits). This measure would close state liquor stores; authorize sale, distribution, and importation of spirits by private parties; and repeal certain requirements that govern the business operations of beer and wine distributors and producers. Should this measure be enacted into law?

☐ Yes
☐ No

Initiative Measure No. 1105
Initiative Measure No. 1105 concerns liquor (beer, wine and spirits). This measure would close all state liquor stores and license private parties to sell or distribute spirits. It would revise laws concerning regulation, taxation and government revenues from distribution and sale of spirits. Should this measure be enacted into law?

☐ Yes
☐ No

Initiative Measure No. 1107
Initiative Measure No. 1107 concerns reversing certain 2010 amendments to state tax laws. This measure would end sales tax on candy; end temporary sales tax on some bottled water; end temporary excise taxes on carbonated beverages; and reduce tax rates for certain food processors. Should this measure be enacted into law?

☐ Yes
☐ No

PROPOSED TO THE PEOPLE BY THE LEGISLATURE

Referendum Bill No. 52
The legislature has passed Engrossed House Bill No. 2561, concerning authorizing and funding bonds for energy efficiency projects in schools. This bill would authorize bonds to finance construction and repair projects increasing energy efficiency in public schools and higher education buildings, and continue the sales tax on bottled water otherwise expiring in 2013. Should this bill be:

☐ Approved
☐ Rejected

Amendment to the State Constitution Senate Joint Resolution No. 8225
The legislature has proposed a constitutional amendment concerning the limitation on state debt. This amendment would require the state to reduce the interest accounted for in calculating the constitutional debt limit, by the amount of federal payments scheduled to be received to offset that interest. Should this constitutional amendment be:

☐ Approved
☐ Rejected

Amendment to the State Constitution Engrossed Substitute House Joint Resolution No. 4220
The legislature has proposed a constitutional amendment on denying bail for persons charged with certain criminal offences. This amendment would authorize courts to deny bail for offenses punishable by the possibility of life in prison, on clear and convincing evidence of a propensity for violence that would likely endanger persons. Should this constitutional amendment be:

☐ Approved
☐ Rejected

READ: Each candidate for partisan office may state a political party that he or she prefers. A candidate's preference does not imply that the candidate is nominated or endorsed by the party, or that the party approves of or associates with that candidate.

FEDERAL - PARTISAN OFFICES

U.S. Senator
6 Year Term - Vote For One

☐ Patty Murray
(Prefers Democratic Party)

☐ Dino Rossi
(Prefers Republican Party)

☐ Write-in

Continue voting next page



Sample Ballot

2073031136



1. _____
 2. _____
 3. _____
 4. _____
 5. _____
 6. _____
 7. _____
 8. _____
 9. _____
 10. _____
 11. _____
 12. _____
 13. _____
 14. _____
 15. _____
 16. _____
 17. _____
 18. _____
 19. _____
 20. _____
 21. _____
 22. _____
 23. _____
 24. _____
 25. _____
 26. _____
 27. _____
 28. _____
 29. _____
 30. _____
 31. _____
 32. _____
 33. _____
 34. _____
 35. _____
 36. _____
 37. _____
 38. _____
 39. _____
 40. _____
 41. _____
 42. _____
 43. _____
 44. _____
 45. _____
 46. _____
 47. _____
 48. _____
 49. _____
 50. _____
 51. _____
 52. _____
 53. _____
 54. _____
 55. _____
 56. _____
 57. _____
 58. _____
 59. _____
 60. _____
 61. _____
 62. _____
 63. _____
 64. _____
 65. _____
 66. _____
 67. _____
 68. _____
 69. _____
 70. _____
 71. _____
 72. _____
 73. _____
 74. _____
 75. _____
 76. _____
 77. _____
 78. _____
 79. _____
 80. _____
 81. _____
 82. _____
 83. _____
 84. _____
 85. _____
 86. _____
 87. _____
 88. _____
 89. _____
 90. _____
 91. _____
 92. _____
 93. _____
 94. _____
 95. _____
 96. _____
 97. _____
 98. _____
 99. _____
 100. _____

Sample Ballot

20000013280

1. The first part of the document is a list of references. The references are listed in a standard format, with the author's name followed by the title of the work and the publisher. The references are as follows:

1. The first part of the document is a list of references. The references are listed in a standard format, with the author's name followed by the title of the work and the publisher. The references are as follows:

SAMPLE BALLOT		
Lewis County, Washington		
State General Election		
November 02, 2010		
Precinct <i>SAMPLE</i>		
<div>U.S. Congressional Dist 3</div> <div>Representative</div> <div>2 Year Term - Vote For One</div> <div><div></div> Denny Heck</div> <div>(Prefers Democratic Party)</div> <div><div></div> Jaime Herrera</div> <div>(Prefers Republican Party)</div> <div><div></div> Write-in</div> <div></div>	<div>Clerk</div> <div>4 Year Term - Vote For One</div> <div><div></div> Kathy A. Brack</div> <div>(Prefers Republican Party)</div> <div><div></div> Write-in</div> <div></div> <div>Coroner</div> <div>4 Year Term - Vote For One</div> <div><div></div> Warren McLeod</div> <div>(Prefers Republican Party)</div> <div><div></div> Micheal T. Hurley</div> <div>(Prefers Republican Party)</div> <div><div></div> Write-in</div> <div></div> <div>County Commissioner Dist 3</div> <div>4 Year Term - Vote For One</div> <div><div></div> F. Lee Grose</div> <div>(Prefers Republican Party)</div> <div><div></div> Sharon N. White</div> <div>(Prefers Democratic Party)</div> <div><div></div> Write-in</div> <div></div> <div>Prosecuting Attorney</div> <div>4 Year Term - Vote For One</div> <div><div></div> Jonathan Meyer</div> <div>(Prefers Republican Party)</div> <div><div></div> Michael Golden</div> <div>(Prefers Republican Party)</div> <div><div></div> Write-in</div> <div></div> <div>Sheriff</div> <div>4 Year Term - Vote For One</div> <div><div></div> Steve Mansfield</div> <div>(Prefers Republican Party)</div> <div><div></div> Ken Cheeseman</div> <div>(Prefers Republican Party)</div> <div><div></div> Write-in</div> <div></div>	<div>Treasurer</div> <div>4 Year Term - Vote For One</div> <div><div></div> Rose A. Bowman</div> <div>(Prefers Republican Party)</div> <div><div></div> Duane E. Taylor</div> <div>(Prefers Independent Party)</div> <div><div></div> Write-in</div> <div></div> <div>JUDICIAL - NONPARTISAN OFFICES</div> <div>Supreme Court Justice Pos 1</div> <div>6 Year Term - Vote For One</div> <div><div></div> Jim Johnson</div> <div><div></div> Write-in</div> <div></div> <div>Supreme Court Justice Pos 5</div> <div>6 Year Term - Vote For One</div> <div><div></div> Barbara Madsen</div> <div><div></div> Write-in</div> <div></div> <div>Supreme Court Justice Pos 6</div> <div>6 Year Term - Vote For One</div> <div><div></div> Richard B. Sanders</div> <div><div></div> Charlie Wiggins</div> <div><div></div> Write-in</div> <div></div> <div>Court of Appeals, Division 2, District 3, Position 2</div> <div>6 Year Term - Vote For One</div> <div><div></div> Jill M. Johanson</div> <div><div></div> Write-in</div> <div></div> <div>District Court Judge Dept 1</div> <div>4 Year Term - Vote For One</div> <div><div></div> Michael P. Roewe</div> <div><div></div> Write-in</div> <div></div> <div>District Court Judge Dept 2</div> <div>4 Year Term - Vote For One</div> <div><div></div> R.W. Buzzard</div> <div><div></div> Write-in</div> <div></div>

Sample Ballot

2073031136

[illegible]

Vote Both Sides



22000010300010

Sample Ballot

200000013183



<div>SAMPLE BALLOT</div> <div>Lewis County, Washington</div> <div>State General Election</div> <div>November 02, 2010</div> <div>Precinct <i>SAMPLE</i></div>		
<div>PUD District No. 1 Comm Dist. #3</div> <div>6 Year Term - Vote For One</div> <div><input type="checkbox"/> Chuck TenPas</div> <div><input type="checkbox"/> Write-in</div> <div></div>		
<div>Fire Protection District No. 5</div> <div>Proposition #1 6 Year Permanent</div> <div>Fire Levy Lid Increase</div> <div>Lewis County Fire Protection District No. 5 shall be authorized to permanently increase its regular property tax levy for maintenance, operations and capital facilities to an amount of \$1.10 per \$1,000.00 of assessed valuation for collection in 2011 and to authorize setting the limit factor at 106% for each of the five succeeding years.</div> <div><input type="checkbox"/> Yes</div> <div><input type="checkbox"/> No</div>		
<div>Fire Protection District No. 14</div> <div>Emergency Medical Services</div> <div>Regular Property Tax Levy</div> <div>Will Lewis County Fire Protection District No. 14 be authorized to impose a regular property tax levy of \$.35 or less per \$1,000 of assessed valuation each year for each of six consecutive years, beginning in 2010 to be collected in 2011 and each of the five following years (2012-2016), for the provision of Emergency Medical Services, all as provided in Lewis County Fire Protection District No. 14 Resolution No. 003-2010 and the Laws of the State of Washington RCW 84.52.069?</div> <div><input type="checkbox"/> Yes</div> <div><input type="checkbox"/> No</div>		

Sample Ballot

2073031136





200000013377

Sample Ballot

220000010400017



This page intentionally left blank



2073031136

Sample Ballot