

Vote Both Sides

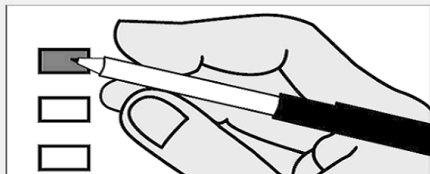
OFFICIAL BALLOT  
STATE PRIMARY ELECTION  
August 07, 2012

Lewis County, Washington

Precinct **SAMPLE**

**Instructions**

**Making selections**



Completely fill in the box to the left of your choice.

Voting more than once for a contest will be an over vote and no votes for that contest will be counted.

**How to correct a mistake**



Draw a line through the entire candidate's name.

You then have the option of making another choice.

**Optional write-in**



To add a candidate, fill in the box provided to the left of "write-in" and print the name clearly on the line.

**READ: Each candidate for partisan office may state a political party that he or she prefers. A candidate's preference does not imply that the candidate is nominated or endorsed by the party, or that the party approves of or associates with that candidate.**

**FEDERAL - PARTISAN OFFICE**

**U.S.Senator**

Vote For One

- Michael Baumgartner  
(Prefers Republican Party)
- Will Baker  
(Prefers Reform Party)
- Chuck Jackson  
(Prefers Republican Party)
- Timmy (Doc) Wilson  
(Prefers Democratic Party)
- Art Coday  
(Prefers Republican Party)
- Maria Cantwell  
(Prefers Democratic Party)
- Glen (Stocky) R. Stockwell  
(Prefers Republican Party)
- Mike the Mover  
(Prefers Republican Party)
- Write-in

**U.S. Congressional Dist 3**

Representative

Vote For One

- Jaime Herrera Beutler  
(Prefers Republican Party)
- Jon T. Haugen  
(Prefers Democratic Party)
- Norma Jean Stevens  
(States No Party Preference)
- Write-in

**STATE - PARTISAN OFFICES**

**Governor**

Vote For One

- Rob Hill  
(Prefers Democratic Party)
- Rob McKenna  
(Prefers Republican Party)
- Jay Inslee  
(Prefers Democratic Party)
- James White  
(Prefers Independent Party)
- Christian Joubert  
(States No Party Preference)
- Shahram Hadian  
(Prefers Republican Party)
- L. Dale Sorgen  
(Prefers Independent Party)
- Max Sampson  
(Prefers Republican Party)
- Javier O. Lopez  
(Prefers Republican Party)
- Write-in

**Lt. Governor**

Vote For One

- Glenn Anderson  
(Prefers Indep Republican Party)
- Brad Owen  
(Prefers Democrat Party)
- James Robert Deal  
(States No Party Preference)
- Bill Finkbeiner  
(Prefers Republican Party)
- Dave T. Sumner IV  
(Prefers Neopopulist Party)
- Mark Greene  
(Prefers Democracy Indep. Party)
- Write-in

**Secretary of State**

Vote For One

- Jim Kastama  
(Prefers Democratic Party)
- David J. Anderson  
(States No Party Preference)
- Sam Wright  
(Prefers The Human Rights Party)
- Karen Murray  
(Prefers Constitution Party)
- Kathleen Drew  
(Prefers Democratic Party)
- Kim Wyman  
(Prefers Republican Party)
- Greg Nickels  
(Prefers Democratic Party)
- Write-in

**State Treasurer**

Vote For One

- Jim McIntire  
(Prefers Democratic Party)
- Write-in

**State Auditor**

Vote For One

- Troy Kelley  
(Prefers Democratic Party)
- James Watkins  
(Prefers Republican Party)
- Mark Miloscia  
(Prefers Democratic Party)
- Craig Pridemore  
(Prefers Democratic Party)
- Write-in

**Attorney General**

Vote For One

- Bob Ferguson  
(Prefers Democratic Party)
- Reagan Dunn  
(Prefers Republican Party)
- Stephen Pidgeon  
(Prefers Republican Party)
- Write-in

**Commissioner of Public Lands**

Vote For One

- Stephen A. Sharon  
(States No Party Preference)
- Peter J. Goldmark  
(Prefers Democratic Party)
- Clint Didier  
(Prefers Republican Party)
- Write-in

10000010100014

000000012141

0923031146

Vote Both Sides

OFFICIAL BALLOT  
STATE PRIMARY ELECTION  
August 07, 2012

Lewis County, Washington

Precinct *SAMPLE*

10000010200021

00000012244

0923031146

STATE- NONPARTISAN OFFICE

Superintendent of Public Instruction  
Vote For One

- James Bauckman
- Randy I. Dorn
- Don Hansler
- John Patterson Blair
- Ronald L. (Ron) Higgins
- Write-in

STATE - PARTISAN OFFICES

Insurance Commissioner  
Vote For One

- John R. Adams  
(Prefers Republican Party)
- Mike Kreidler  
(Prefers Democratic Party)
- Scott Reilly  
(Prefers Republican Party)
- Brian C. Berend  
(Prefers Independent Party)
- Write-in

Legislative Dist 19 State Senator  
Vote For One

- Brian Hatfield  
(Prefers Democratic Party)
- Rick Winsman  
(Prefers Republican Party)
- Write-in

Legislative Dist 19 State Representative Pos. 1  
Vote For One

- Dixie Kolditz  
(Prefers Republican Party)
- Dean Takko  
(Prefers Democratic Party)
- Write-in

Legislative Dist 19 State Representative Pos. 2  
Vote For One

- Brian E. Blake  
(Prefers Democratic Party)
- Write-in

Legislative Dist 20 State Senator  
Vote For One

- John E. Braun  
(Prefers Republican Party)
- Dan Swecker  
(Prefers Republican Party)
- Rae Lowery  
(Prefers Republican Party)
- Write-in

Legislative Dist 20 State Representative Pos. 1  
Vote For One

- Richard DeBolt  
(Prefers Republican Party)
- Write-in

Legislative Dist 20 State Representative Pos. 2  
Vote For One

- John Morgan  
(Prefers Republican Party)
- Ed Orcutt  
(Prefers Republican Party)
- Write-in

COUNTY - PARTISAN OFFICES

County Commissioner Dist No. 1  
Vote For One

- Ron Averill  
(Prefers Republican Party)
- Edna J. Fund  
(Prefers Republican Party)
- Write-in

County Commissioner Dist No. 2  
Vote For One

- Gerald O. Lord  
(Prefers Republican Party)
- Bill Schulte  
(Prefers Republican Party)
- Write-in

JUDICIAL - NONPARTISAN OFFICES

Supreme Court Justice Pos. 2  
Vote For One

- Douglas W. McQuaid
- Susan Owens
- Scott Stafne
- Write-in

Supreme Court Justice Pos. 8  
6 Yr Short and Full Term Vote For One

- Bruce O. Danielson
- Steve Gonzalez
- Write-in

Supreme Court Justice Pos. 9  
Vote For One

- Bruce Hilyer
- Sheryl Gordon McCloud
- Richard B. Sanders
- John W. Ladenburg
- Write-in

Court of Appeals, Division 2,  
District 3, Judge Pos. 1  
Vote For One

- Joel Penoyar
- Write-in

Superior Court Judge Dept. 1  
Vote For One

- Nelson E. Hunt
- Write-in

Superior Court Judge Dept. 2  
Vote For One

- James W. Lawler
- Write-in

Superior Court Judge Dept. 3  
Vote For One

- Richard L. Brosey
- Write-in