

Sample Ballot
Lewis County, Washington
State General Election
November 06, 2012

Precinct 1 SAMPLE

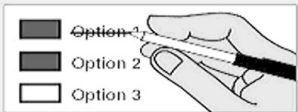
Instructions

Making selections



Using a dark blue or black ink pen, completely fill in the box to the left of your choice. Do not use colored ink pens that soak through the ballot. Voting more than once for a contest will be an over vote and no votes for that contest will be counted.

How to correct a mistake



Draw a line through the entire measure response or candidate's name. Then you may make another choice.

Optional write-in



To add a candidate, fill in the box provided to the left of "write-in" and print the name on the line.

Lewis County Elections

For a replacement ballot, or for information on Accessible Voting Units (available 20 days before Election Day), please call us at: (360) 740-1278 or toll-free within Lewis County: (800) 562-6130 ext 1278

State Measures

PROPOSED BY INITIATIVE PETITION

Initiative Measure No. 1185
Initiative Measure No. 1185 concerns tax and fee increases imposed by state government. This measure would restate existing statutory requirements that legislative actions raising taxes must be approved by two-thirds legislative majorities or receive voter approval, and that new or increased fees require majority legislative approval. Should this measure be enacted into law?

- Yes
- No

Initiative Measure No. 1240
Initiative Measure No. 1240 concerns creation of a public charter school system. This measure would authorize up to forty publicly-funded charter schools open to all students, operated through approved, nonreligious, nonprofit organizations, with government oversight; and modify certain laws applicable to them as public schools. Should this measure be enacted into law?

- Yes
- No

PASSED BY THE LEGISLATURE AND ORDERED REFERRED BY PETITION

Referendum Measure No. 74
The legislature passed Engrossed Substitute Senate Bill 6239 concerning marriage for same-sex couples, modified domestic-partnership law, and religious freedom, and voters have filed a sufficient referendum petition on this bill. This bill would allow same-sex couples to marry, preserve domestic partnerships only for seniors, and preserve the right of clergy or religious organizations to refuse to perform, recognize, or accommodate any marriage ceremony. Should this bill be:

- Approved
- Rejected

PROPOSED TO THE LEGISLATURE AND REFERRED TO THE PEOPLE

Initiative Measure No. 502
Initiative Measure No. 502 concerns marijuana. This measure would license and regulate marijuana production, distribution, and possession for persons over twenty-one; remove state-law criminal and civil penalties for activities that it authorizes; tax marijuana sales; and earmark marijuana-related revenues. Should this measure be enacted into law?

- Yes
- No

PROPOSED TO THE PEOPLE BY THE LEGISLATURE-AMENDMENT TO THE STATE CONSTITUTION

Engrossed Senate Joint Resolution No. 8221
The Legislature has proposed a constitutional amendment on implementing the Commission on State Debt recommendations regarding Washington's debt limit. This amendment would, starting July 1, 2014, phase-down the debt limit percentage in three steps from nine to eight percent and modify the calculation date, calculation period, and the term general state revenues. Should this constitutional amendment be:

- Approved
- Rejected

Senate Joint Resolution No. 8223
The Legislature has proposed a constitutional amendment on investments by the University of Washington and Washington State University. This amendment would create an exception to constitutional restrictions on investing public funds by allowing these universities to invest specified public funds as authorized by the legislature, including in private companies or stock. Should this constitutional amendment be:

- Approved
- Rejected

ADVISORY VOTE OF THE PEOPLE

Advisory Vote No. 1 Engrossed Senate Bill 6635
The legislature eliminated, without a vote of the people, a business and occupation tax deduction for certain financial institutions' interest on residential loans, costing \$170,000,000, in its first ten years, for government spending. This tax increase should be:

- Repealed
- Maintained

Advisory Vote No. 2 Substitute House Bill 2590

The legislature extended, without a vote of the people, expiration of a tax on possession of petroleum products and reduced the tax rate, costing \$24,000,000, in its first ten years, for government spending. This tax increase should be:

- Repealed
- Maintained

Federal: Partisan Offices

President and Vice-President of the United States

Barack Obama and Joe Biden
Democratic Party Nominees

Mitt Romney and Paul Ryan
Republican Party Nominees

Gary Johnson and James P. Gray
Libertarian Party Nominees

Virgil Goode and James N. Clymer
Constitution Party Nominees

Jill Stein and Cheri Honkala
Green Party Nominees

Peta Lindsay and Yari Osorio
Socialism & Liberation Party Nominees

James Harris and Alyson Kennedy
Socialist Workers Party Nominees

Ross C. (Rocky) Anderson and Luis J. Rodriguez
Justice Party Nominees

Write-in

READ: Each candidate for President and Vice President is the official nominee of a political party. For other partisan offices, each candidate may state a political party that he or she prefers. A candidate's preference does not imply that the candidate is nominated or endorsed by the party, or that the party approves of or associates with that candidate.

U.S.Senator
 Maria Cantwell
(Prefers Democratic Party)

Michael Baumgartner
(Prefers Republican Party)

Write-in

Congressional Dist 3 U.S. Representative

Jaime Herrera Beutler
(Prefers Republican Party)

Jon T. Haugen
(Prefers Democratic Party)

Write-in

State: Partisan Offices

Governor
 Jay Inslee
(Prefers Democratic Party)

Rob McKenna
(Prefers Republican Party)

Write-in

Lt. Governor
 Brad Owen
(Prefers Democrat Party)

Bill Finkbeiner
(Prefers Republican Party)

Write-in

Secretary of State
 Kim Wyman
(Prefers Republican Party)

Kathleen Drew
(Prefers Democratic Party)

Write-in

State Treasurer
 Jim McIntire
(Prefers Democratic Party)

Sharon Hanek
(Prefers Republican Party)

Write-in

State Auditor
 James Watkins
(Prefers Republican Party)

Troy Kelley
(Prefers Democratic Party)

Write-in

Attorney General
 Bob Ferguson
(Prefers Democratic Party)

Reagan Dunn
(Prefers Republican Party)

Write-in

11000010100061

Test Ballot

500000011131



Test Ballot

1023031162



Sample Ballot
Lewis County, Washington
State General Election
November 06, 2012

Precinct 1 SAMPLE

Commissioner of Public Lands
 Peter J. Goldmark
(Prefers Democratic Party)
 Clint Didier
(Prefers Republican Party)
 Write-in

Legislative Dist 20 State Representative Pos. 1
 Richard DeBolt
(Prefers Republican Party)
 Write-in

Superior Court Judge Dept. 2
 James W. Lawler
 Write-in

State: Non-Partisan Offices

Superintendent of Public Instruction
 Randy I. Dorn
 Write-in

Legislative Dist 20 State Representative Pos. 2
 Ed Orcutt
(Prefers Republican Party)
 John Morgan
(Prefers Republican Party)
 Write-in

Superior Court Judge Dept. 3
 Richard L. Brosey
 Write-in

State: Partisan Offices

Insurance Commissioner
 Mike Kreidler
(Prefers Democratic Party)
 John R. Adams
(Prefers Republican Party)
 Write-in

County: Partisan Offices

County Commissioner Dist No. 1
 Edna J. Fund
(Prefers Republican Party)
 Ron Averill
(Prefers Republican Party)
 Write-in

PUBLIC UTILITY DISTRICT
PUD Commissioner Dist No. 2
 Dean Dahlin
 James H. Hubenthal
 Write-in

Legislative Dist 19 State Senator
 Brian Hatfield
(Prefers Democratic Party)
 Rick Winsman
(Prefers Republican Party)
 Write-in

County Commissioner Dist No. 2
 Bill Schulte
(Prefers Republican Party)
 Gerald O. Lord
(Prefers Republican Party)
 Write-in

CITY OF MORTON
Annexation of the City of Morton to the Timberland Regional Library
Shall the City of Morton be annexed to and be a part of the Timberland Regional Library?
 Yes
 No

Legislative Dist 19 State Representative Pos. 1
 Dean Takko
(Prefers Democratic Party)
 Dixie Kolditz
(Prefers Republican Party)
 Write-in

Judicial: Non-Partisan Offices

Supreme Court Justice Pos. 2
 Susan Owens
 Write-in

FIRE DISTRICT
Lewis County Fire Protection District No. 6-Chehalis
PROPOSITION TO RENEW A REGULAR EMERGENCY MEDICAL SERVICES PROPERTY TAX LEVY.
The Board of Fire Commissioners of Lewis County Fire Protection District No. 6 adopted Resolution No. 200-000-124 concerning a proposition to renew the District's expiring EMS Levy. The proposition would authorize the Board of Fire Commissioners to renew the expiring EMS levy and continue to fund emergency medical services for its citizens by imposing a regular property tax levy of \$.25 per \$1,000.00 of assessed valuation for each of ten consecutive years to be collected beginning in 2013 subject to applicable statutory limitations. Should this proposition be enacted into law?
 Yes
 No

Legislative Dist 19 State Representative Pos. 2
 Brian E. Blake
(Prefers Democratic Party)
 Tim Sutinen
(Prefers Independent Party)
 Write-in

Supreme Court Justice Pos. 8
6 Yr Short and Full Term
 Steve Gonzalez
 Write-in

Supreme Court Justice Pos. 9
 Sheryl Gordon McCloud
 Richard B. Sanders
 Write-in

Legislative Dist 20 State Senator
 Dan Swecker
(Prefers Republican Party)
 John E. Braun
(Prefers Republican Party)
 Write-in

Court of Appeals, Division 2, District 3, Judge Position 1
 Joel Penoyar
 Write-in

Superior Court Judge Dept. 1
 Nelson E. Hunt
 Write-in

11000010200068

Test Ballot

500000011228

Test Ballot

1023031162

Sample Ballot
Lewis County, Washington
State General Election
November 06, 2012

Precinct 1 SAMPLE

Instructions

Making selections



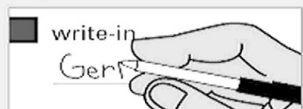
Using a dark blue or black ink pen, completely fill in the box to the left of your choice. Do not use colored ink pens that soak through the ballot. Voting more than once for a contest will be an over vote and no votes for that contest will be counted.

How to correct a mistake



Draw a line through the entire measure response or candidate's name. Then you may make another choice.

Optional write-in



To add a candidate, fill in the box provided to the left of "write-in" and print the name on the line.

Lewis County Elections

For a replacement ballot, or for information on Accessible Voting Units (available 20 days before Election Day), please call us at: (360) 740-1278 or toll-free within Lewis County: (800) 562-6130 ext 1278

State Measures

PROPOSED BY INITIATIVE PETITION

Initiative Measure No. 1185

Initiative Measure No. 1185 concerns tax and fee increases imposed by state government. This measure would restate existing statutory requirements that legislative actions raising taxes must be approved by two-thirds legislative majorities or receive voter approval, and that new or increased fees require majority legislative approval. Should this measure be enacted into law?

- Yes
- No

Initiative Measure No. 1240

Initiative Measure No. 1240 concerns creation of a public charter school system. This measure would authorize up to forty publicly-funded charter schools open to all students, operated through approved, nonreligious, nonprofit organizations, with government oversight; and modify certain laws applicable to them as public schools. Should this measure be enacted into law?

- Yes
- No

PASSED BY THE LEGISLATURE AND ORDERED REFERRED BY PETITION

Referendum Measure No. 74

The legislature passed Engrossed Substitute Senate Bill 6239 concerning marriage for same-sex couples, modified domestic-partnership law, and religious freedom, and voters have filed a sufficient referendum petition on this bill. This bill would allow same-sex couples to marry, preserve domestic partnerships only for seniors, and preserve the right of clergy or religious organizations to refuse to perform, recognize, or accommodate any marriage ceremony. Should this bill be:

- Approved
- Rejected

PROPOSED TO THE LEGISLATURE AND REFERRED TO THE PEOPLE

Initiative Measure No. 502

Initiative Measure No. 502 concerns marijuana. This measure would license and regulate marijuana production, distribution, and possession for persons over twenty-one; remove state-law criminal and civil penalties for activities that it authorizes; tax marijuana sales; and earmark marijuana-related revenues. Should this measure be enacted into law?

- Yes
- No

PROPOSED TO THE PEOPLE BY THE LEGISLATURE-AMENDMENT TO THE STATE CONSTITUTION

Engrossed Senate Joint Resolution No. 8221

The Legislature has proposed a constitutional amendment on implementing the Commission on State Debt recommendations regarding Washington's debt limit. This amendment would, starting July 1, 2014, phase-down the debt limit percentage in three steps from nine to eight percent and modify the calculation date, calculation period, and the term general state revenues. Should this constitutional amendment be:

- Approved
- Rejected

Senate Joint Resolution No. 8223

The Legislature has proposed a constitutional amendment on investments by the University of Washington and Washington State University. This amendment would create an exception to constitutional restrictions on investing public funds by allowing these universities to invest specified public funds as authorized by the legislature, including in private companies or stock. Should this constitutional amendment be:

- Approved
- Rejected

ADVISORY VOTE OF THE PEOPLE

Advisory Vote No. 1 Engrossed Senate Bill 6635

The legislature eliminated, without a vote of the people, a business and occupation tax deduction for certain financial institutions' interest on residential loans, costing \$170,000,000, in its first ten years, for government spending. This tax increase should be:

- Repealed
- Maintained

Advisory Vote No. 2 Substitute House Bill 2590

The legislature extended, without a vote of the people, expiration of a tax on possession of petroleum products and reduced the tax rate, costing \$24,000,000, in its first ten years, for government spending. This tax increase should be:

- Repealed
- Maintained

Federal: Partisan Offices

President and Vice-President of the United States

Barack Obama and Joe Biden
Democratic Party Nominees

Mitt Romney and Paul Ryan
Republican Party Nominees

Gary Johnson and James P. Gray
Libertarian Party Nominees

Virgil Goode and James N. Clymer
Constitution Party Nominees

Jill Stein and Cheri Honkala
Green Party Nominees

Peta Lindsay and Yari Osorio
Socialism & Liberation Party Nominees

James Harris and Alyson Kennedy
Socialist Workers Party Nominees

Ross C. (Rocky) Anderson and Luis J. Rodriguez
Justice Party Nominees

Write-in

READ: Each candidate for President and Vice President is the official nominee of a political party. For other partisan offices, each candidate may state a political party that he or she prefers. A candidate's preference does not imply that the candidate is nominated or endorsed by the party, or that the party approves of or associates with that candidate.

U.S.Senator

Maria Cantwell
(Prefers Democratic Party)

Michael Baumgartner
(Prefers Republican Party)

Write-in

Congressional Dist 3 U.S. Representative

Jaime Herrera Beutler
(Prefers Republican Party)

Jon T. Haugen
(Prefers Democratic Party)

Write-in

State: Partisan Offices

Governor

Jay Inslee
(Prefers Democratic Party)

Rob McKenna
(Prefers Republican Party)

Write-in

Lt. Governor

Brad Owen
(Prefers Democrat Party)

Bill Finkbeiner
(Prefers Republican Party)

Write-in

Secretary of State

Kim Wyman
(Prefers Republican Party)

Kathleen Drew
(Prefers Democratic Party)

Write-in

State Treasurer

Jim McIntire
(Prefers Democratic Party)

Sharon Hanek
(Prefers Republican Party)

Write-in

State Auditor

James Watkins
(Prefers Republican Party)

Troy Kelley
(Prefers Democratic Party)

Write-in

Attorney General

Bob Ferguson
(Prefers Democratic Party)

Reagan Dunn
(Prefers Republican Party)

Write-in

11000010100061

Test Ballot

600000012193

Test Ballot

1023031162

Sample Ballot
Lewis County, Washington
State General Election
November 06, 2012

Precinct 1 SAMPLE

Commissioner of Public Lands
 Peter J. Goldmark
(Prefers Democratic Party)
 Clint Didier
(Prefers Republican Party)
 Write-in

Legislative Dist 20 State Representative Pos. 1
 Richard DeBolt
(Prefers Republican Party)
 Write-in

Superior Court Judge Dept. 2
 James W. Lawler
 Write-in

State: Non-Partisan Offices

Superintendent of Public Instruction
 Randy I. Dorn
 Write-in

Legislative Dist 20 State Representative Pos. 2
 Ed Orcutt
(Prefers Republican Party)
 John Morgan
(Prefers Republican Party)
 Write-in

Superior Court Judge Dept. 3
 Richard L. Brosey
 Write-in

State: Partisan Offices

Insurance Commissioner
 Mike Kreidler
(Prefers Democratic Party)
 John R. Adams
(Prefers Republican Party)
 Write-in

County: Partisan Offices

County Commissioner Dist No. 1
 Edna J. Fund
(Prefers Republican Party)
 Ron Averill
(Prefers Republican Party)
 Write-in

PUBLIC UTILITY DISTRICT
PUD Commissioner Dist No. 2
 Dean Dahlin
 James H. Hubenthal
 Write-in

Legislative Dist 19 State Senator
 Brian Hatfield
(Prefers Democratic Party)
 Rick Winsman
(Prefers Republican Party)
 Write-in

County Commissioner Dist No. 2
 Bill Schulte
(Prefers Republican Party)
 Gerald O. Lord
(Prefers Republican Party)
 Write-in

CITY OF MORTON
Annexation of the City of Morton to the Timberland Regional Library
Shall the City of Morton be annexed to and be a part of the Timberland Regional Library?
 Yes
 No

Legislative Dist 19 State Representative Pos. 1
 Dean Takko
(Prefers Democratic Party)
 Dixie Kolditz
(Prefers Republican Party)
 Write-in

Judicial: Non-Partisan Offices

Supreme Court Justice Pos. 2
 Susan Owens
 Write-in

FIRE DISTRICT
Lewis County Fire Protection District No. 6-Chehalis
PROPOSITION TO RENEW A REGULAR EMERGENCY MEDICAL SERVICES PROPERTY TAX LEVY.
The Board of Fire Commissioners of Lewis County Fire Protection District No. 6 adopted Resolution No. 200-000-124 concerning a proposition to renew the District's expiring EMS Levy. The proposition would authorize the Board of Fire Commissioners to renew the expiring EMS levy and continue to fund emergency medical services for its citizens by imposing a regular property tax levy of \$.25 per \$1,000.00 of assessed valuation for each of ten consecutive years to be collected beginning in 2013 subject to applicable statutory limitations. Should this proposition be enacted into law?
 Yes
 No

Legislative Dist 19 State Representative Pos. 2
 Brian E. Blake
(Prefers Democratic Party)
 Tim Sutinen
(Prefers Independent Party)
 Write-in

Supreme Court Justice Pos. 8
6 Yr Short and Full Term
 Steve Gonzalez
 Write-in

Supreme Court Justice Pos. 9
 Sheryl Gordon McCloud
 Richard B. Sanders
 Write-in

Legislative Dist 20 State Senator
 Dan Swecker
(Prefers Republican Party)
 John E. Braun
(Prefers Republican Party)
 Write-in

Court of Appeals, Division 2, District 3, Judge Position 1
 Joel Penoyar
 Write-in

Superior Court Judge Dept. 1
 Nelson E. Hunt
 Write-in

11000010200068

Test Ballot

600000012290

Test Ballot

1023031162

Sample Ballot
Lewis County, Washington
State General Election
November 06, 2012

Precinct 1 SAMPLE

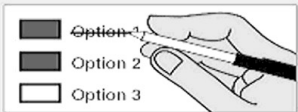
Instructions

Making selections



Using a dark blue or black ink pen, completely fill in the box to the left of your choice. Do not use colored ink pens that soak through the ballot. Voting more than once for a contest will be an over vote and no votes for that contest will be counted.

How to correct a mistake



Draw a line through the entire measure response or candidate's name. Then you may make another choice.

Optional write-in



To add a candidate, fill in the box provided to the left of "write-in" and print the name on the line.

Lewis County Elections

For a replacement ballot, or for information on Accessible Voting Units (available 20 days before Election Day), please call us at: (360) 740-1278 or toll-free within Lewis County: (800) 562-6130 ext 1278

State Measures

PROPOSED BY INITIATIVE PETITION

Initiative Measure No. 1185
Initiative Measure No. 1185 concerns tax and fee increases imposed by state government. This measure would restate existing statutory requirements that legislative actions raising taxes must be approved by two-thirds legislative majorities or receive voter approval, and that new or increased fees require majority legislative approval. Should this measure be enacted into law?

- Yes
- No

Initiative Measure No. 1240
Initiative Measure No. 1240 concerns creation of a public charter school system. This measure would authorize up to forty publicly-funded charter schools open to all students, operated through approved, nonreligious, nonprofit organizations, with government oversight; and modify certain laws applicable to them as public schools. Should this measure be enacted into law?

- Yes
- No

PASSED BY THE LEGISLATURE AND ORDERED REFERRED BY PETITION

Referendum Measure No. 74
The legislature passed Engrossed Substitute Senate Bill 6239 concerning marriage for same-sex couples, modified domestic-partnership law, and religious freedom, and voters have filed a sufficient referendum petition on this bill. This bill would allow same-sex couples to marry, preserve domestic partnerships only for seniors, and preserve the right of clergy or religious organizations to refuse to perform, recognize, or accommodate any marriage ceremony. Should this bill be:

- Approved
- Rejected

PROPOSED TO THE LEGISLATURE AND REFERRED TO THE PEOPLE

Initiative Measure No. 502
Initiative Measure No. 502 concerns marijuana. This measure would license and regulate marijuana production, distribution, and possession for persons over twenty-one; remove state-law criminal and civil penalties for activities that it authorizes; tax marijuana sales; and earmark marijuana-related revenues. Should this measure be enacted into law?

- Yes
- No

PROPOSED TO THE PEOPLE BY THE LEGISLATURE-AMENDMENT TO THE STATE CONSTITUTION

Engrossed Senate Joint Resolution No. 8221
The Legislature has proposed a constitutional amendment on implementing the Commission on State Debt recommendations regarding Washington's debt limit. This amendment would, starting July 1, 2014, phase-down the debt limit percentage in three steps from nine to eight percent and modify the calculation date, calculation period, and the term general state revenues. Should this constitutional amendment be:

- Approved
- Rejected

Senate Joint Resolution No. 8223
The Legislature has proposed a constitutional amendment on investments by the University of Washington and Washington State University. This amendment would create an exception to constitutional restrictions on investing public funds by allowing these universities to invest specified public funds as authorized by the legislature, including in private companies or stock. Should this constitutional amendment be:

- Approved
- Rejected

ADVISORY VOTE OF THE PEOPLE

Advisory Vote No. 1 Engrossed Senate Bill 6635
The legislature eliminated, without a vote of the people, a business and occupation tax deduction for certain financial institutions' interest on residential loans, costing \$170,000,000, in its first ten years, for government spending. This tax increase should be:

- Repealed
- Maintained

Advisory Vote No. 2 Substitute House Bill 2590

The legislature extended, without a vote of the people, expiration of a tax on possession of petroleum products and reduced the tax rate, costing \$24,000,000, in its first ten years, for government spending. This tax increase should be:

- Repealed
- Maintained

Federal: Partisan Offices

President and Vice-President of the United States

Barack Obama and Joe Biden
Democratic Party Nominees

Mitt Romney and Paul Ryan
Republican Party Nominees

Gary Johnson and James P. Gray
Libertarian Party Nominees

Virgil Goode and James N. Clymer
Constitution Party Nominees

Jill Stein and Cheri Honkala
Green Party Nominees

Peta Lindsay and Yari Osorio
Socialism & Liberation Party Nominees

James Harris and Alyson Kennedy
Socialist Workers Party Nominees

Ross C. (Rocky) Anderson and Luis J. Rodriguez
Justice Party Nominees

Write-in

READ: Each candidate for President and Vice President is the official nominee of a political party. For other partisan offices, each candidate may state a political party that he or she prefers. A candidate's preference does not imply that the candidate is nominated or endorsed by the party, or that the party approves of or associates with that candidate.

U.S.Senator
 Maria Cantwell
(Prefers Democratic Party)

Michael Baumgartner
(Prefers Republican Party)

Write-in

Congressional Dist 3 U.S. Representative

Jaime Herrera Beutler
(Prefers Republican Party)

Jon T. Haugen
(Prefers Democratic Party)

Write-in

State: Partisan Offices

Governor
 Jay Inslee
(Prefers Democratic Party)

Rob McKenna
(Prefers Republican Party)

Write-in

Lt. Governor
 Brad Owen
(Prefers Democrat Party)

Bill Finkbeiner
(Prefers Republican Party)

Write-in

Secretary of State
 Kim Wyman
(Prefers Republican Party)

Kathleen Drew
(Prefers Democratic Party)

Write-in

State Treasurer
 Jim McIntire
(Prefers Democratic Party)

Sharon Hanek
(Prefers Republican Party)

Write-in

State Auditor
 James Watkins
(Prefers Republican Party)

Troy Kelley
(Prefers Democratic Party)

Write-in

Attorney General
 Bob Ferguson
(Prefers Democratic Party)

Reagan Dunn
(Prefers Republican Party)

Write-in

11000010100061

Test Ballot

700000013158

Test Ballot

1023031162

Sample Ballot
Lewis County, Washington
State General Election
November 06, 2012

Precinct 1 SAMPLE

Commissioner of Public Lands
 Peter J. Goldmark
(Prefers Democratic Party)
 Clint Didier
(Prefers Republican Party)
 Write-in

Legislative Dist 20 State Representative Pos. 1
 Richard DeBolt
(Prefers Republican Party)
 Write-in

Superior Court Judge Dept. 2
 James W. Lawler
 Write-in

State: Non-Partisan Offices

Superintendent of Public Instruction
 Randy I. Dorn
 Write-in

Legislative Dist 20 State Representative Pos. 2
 Ed Orcutt
(Prefers Republican Party)
 John Morgan
(Prefers Republican Party)
 Write-in

Superior Court Judge Dept. 3
 Richard L. Brosey
 Write-in

State: Partisan Offices

Insurance Commissioner
 Mike Kreidler
(Prefers Democratic Party)
 John R. Adams
(Prefers Republican Party)
 Write-in

County: Partisan Offices

County Commissioner Dist No. 1
 Edna J. Fund
(Prefers Republican Party)
 Ron Averill
(Prefers Republican Party)
 Write-in

PUBLIC UTILITY DISTRICT
PUD Commissioner Dist No. 2
 Dean Dahlin
 James H. Hubenthal
 Write-in

Legislative Dist 19 State Senator
 Brian Hatfield
(Prefers Democratic Party)
 Rick Winsman
(Prefers Republican Party)
 Write-in

County Commissioner Dist No. 2
 Bill Schulte
(Prefers Republican Party)
 Gerald O. Lord
(Prefers Republican Party)
 Write-in

CITY OF MORTON
Annexation of the City of Morton to the Timberland Regional Library
Shall the City of Morton be annexed to and be a part of the Timberland Regional Library?
 Yes
 No

Legislative Dist 19 State Representative Pos. 1
 Dean Takko
(Prefers Democratic Party)
 Dixie Kolditz
(Prefers Republican Party)
 Write-in

Judicial: Non-Partisan Offices

Supreme Court Justice Pos. 2
 Susan Owens
 Write-in

FIRE DISTRICT
Lewis County Fire Protection District No. 6-Chehalis
PROPOSITION TO RENEW A REGULAR EMERGENCY MEDICAL SERVICES PROPERTY TAX LEVY.
The Board of Fire Commissioners of Lewis County Fire Protection District No. 6 adopted Resolution No. 200-000-124 concerning a proposition to renew the District's expiring EMS Levy. The proposition would authorize the Board of Fire Commissioners to renew the expiring EMS levy and continue to fund emergency medical services for its citizens by imposing a regular property tax levy of \$.25 per \$1,000.00 of assessed valuation for each of ten consecutive years to be collected beginning in 2013 subject to applicable statutory limitations. Should this proposition be enacted into law?
 Yes
 No

Legislative Dist 19 State Representative Pos. 2
 Brian E. Blake
(Prefers Democratic Party)
 Tim Sutinen
(Prefers Independent Party)
 Write-in

Supreme Court Justice Pos. 8
6 Yr Short and Full Term
 Steve Gonzalez
 Write-in

Supreme Court Justice Pos. 9
 Sheryl Gordon McCloud
 Richard B. Sanders
 Write-in

Legislative Dist 20 State Senator
 Dan Swecker
(Prefers Republican Party)
 John E. Braun
(Prefers Republican Party)
 Write-in

Court of Appeals, Division 2, District 3, Judge Position 1
 Joel Penoyar
 Write-in

Superior Court Judge Dept. 1
 Nelson E. Hunt
 Write-in

11000010200068

Test Ballot

700000013255

Test Ballot

1023031162

Sample Ballot
Lewis County, Washington
State General Election
November 06, 2012

Precinct 1 SAMPLE

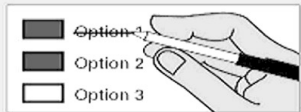
Instructions

Making selections



Using a dark blue or black ink pen, completely fill in the box to the left of your choice. Do not use colored ink pens that soak through the ballot. Voting more than once for a contest will be an over vote and no votes for that contest will be counted.

How to correct a mistake



Draw a line through the entire measure response or candidate's name. Then you may make another choice.

Optional write-in



To add a candidate, fill in the box provided to the left of "write-in" and print the name on the line.

Lewis County Elections

For a replacement ballot, or for information on Accessible Voting Units (available 20 days before Election Day), please call us at: (360) 740-1278 or toll-free within Lewis County: (800) 562-6130 ext 1278

State Measures

PROPOSED BY INITIATIVE PETITION

Initiative Measure No. 1185
Initiative Measure No. 1185 concerns tax and fee increases imposed by state government. This measure would restate existing statutory requirements that legislative actions raising taxes must be approved by two-thirds legislative majorities or receive voter approval, and that new or increased fees require majority legislative approval. Should this measure be enacted into law?

- Yes
- No

Initiative Measure No. 1240
Initiative Measure No. 1240 concerns creation of a public charter school system. This measure would authorize up to forty publicly-funded charter schools open to all students, operated through approved, nonreligious, nonprofit organizations, with government oversight; and modify certain laws applicable to them as public schools. Should this measure be enacted into law?

- Yes
- No

PASSED BY THE LEGISLATURE AND ORDERED REFERRED BY PETITION

Referendum Measure No. 74
The legislature passed Engrossed Substitute Senate Bill 6239 concerning marriage for same-sex couples, modified domestic-partnership law, and religious freedom, and voters have filed a sufficient referendum petition on this bill. This bill would allow same-sex couples to marry, preserve domestic partnerships only for seniors, and preserve the right of clergy or religious organizations to refuse to perform, recognize, or accommodate any marriage ceremony. Should this bill be:

- Approved
- Rejected

PROPOSED TO THE LEGISLATURE AND REFERRED TO THE PEOPLE

Initiative Measure No. 502
Initiative Measure No. 502 concerns marijuana. This measure would license and regulate marijuana production, distribution, and possession for persons over twenty-one; remove state-law criminal and civil penalties for activities that it authorizes; tax marijuana sales; and earmark marijuana-related revenues. Should this measure be enacted into law?

- Yes
- No

PROPOSED TO THE PEOPLE BY THE LEGISLATURE-AMENDMENT TO THE STATE CONSTITUTION

Engrossed Senate Joint Resolution No. 8221
The Legislature has proposed a constitutional amendment on implementing the Commission on State Debt recommendations regarding Washington's debt limit. This amendment would, starting July 1, 2014, phase-down the debt limit percentage in three steps from nine to eight percent and modify the calculation date, calculation period, and the term general state revenues. Should this constitutional amendment be:

- Approved
- Rejected

Senate Joint Resolution No. 8223
The Legislature has proposed a constitutional amendment on investments by the University of Washington and Washington State University. This amendment would create an exception to constitutional restrictions on investing public funds by allowing these universities to invest specified public funds as authorized by the legislature, including in private companies or stock. Should this constitutional amendment be:

- Approved
- Rejected

ADVISORY VOTE OF THE PEOPLE

Advisory Vote No. 1 Engrossed Senate Bill 6635
The legislature eliminated, without a vote of the people, a business and occupation tax deduction for certain financial institutions' interest on residential loans, costing \$170,000,000, in its first ten years, for government spending. This tax increase should be:

- Repealed
- Maintained

Advisory Vote No. 2 Substitute House Bill 2590

The legislature extended, without a vote of the people, expiration of a tax on possession of petroleum products and reduced the tax rate, costing \$24,000,000, in its first ten years, for government spending. This tax increase should be:

- Repealed
- Maintained

Federal: Partisan Offices

President and Vice-President of the United States

Barack Obama and Joe Biden
Democratic Party Nominees

Mitt Romney and Paul Ryan
Republican Party Nominees

Gary Johnson and James P. Gray
Libertarian Party Nominees

Virgil Goode and James N. Clymer
Constitution Party Nominees

Jill Stein and Cheri Honkala
Green Party Nominees

Peta Lindsay and Yari Osorio
Socialism & Liberation Party Nominees

James Harris and Alyson Kennedy
Socialist Workers Party Nominees

Ross C. (Rocky) Anderson and Luis J. Rodriguez
Justice Party Nominees

Write-in

READ: Each candidate for President and Vice President is the official nominee of a political party. For other partisan offices, each candidate may state a political party that he or she prefers. A candidate's preference does not imply that the candidate is nominated or endorsed by the party, or that the party approves of or associates with that candidate.

U.S.Senator
 Maria Cantwell
(Prefers Democratic Party)

Michael Baumgartner
(Prefers Republican Party)

Write-in

Congressional Dist 3 U.S. Representative

Jaime Herrera Beutler
(Prefers Republican Party)

Jon T. Haugen
(Prefers Democratic Party)

Write-in

State: Partisan Offices

Governor
 Jay Inslee
(Prefers Democratic Party)

Rob McKenna
(Prefers Republican Party)

Write-in

Lt. Governor
 Brad Owen
(Prefers Democrat Party)

Bill Finkbeiner
(Prefers Republican Party)

Write-in

Secretary of State
 Kim Wyman
(Prefers Republican Party)

Kathleen Drew
(Prefers Democratic Party)

Write-in

State Treasurer
 Jim McIntire
(Prefers Democratic Party)

Sharon Hanek
(Prefers Republican Party)

Write-in

State Auditor
 James Watkins
(Prefers Republican Party)

Troy Kelley
(Prefers Democratic Party)

Write-in

Attorney General
 Bob Ferguson
(Prefers Democratic Party)

Reagan Dunn
(Prefers Republican Party)

Write-in

11000010100061

Test Ballot

800000014123

Test Ballot

1023031162

Sample Ballot
Lewis County, Washington
State General Election
November 06, 2012

Precinct 1 SAMPLE

Commissioner of Public Lands
 Peter J. Goldmark
(Prefers Democratic Party)
 Clint Didier
(Prefers Republican Party)
 Write-in

Legislative Dist 20 State Representative Pos. 1
 Richard DeBolt
(Prefers Republican Party)
 Write-in

Superior Court Judge Dept. 2
 James W. Lawler
 Write-in

State: Non-Partisan Offices

Superintendent of Public Instruction
 Randy I. Dorn
 Write-in

Legislative Dist 20 State Representative Pos. 2
 Ed Orcutt
(Prefers Republican Party)
 John Morgan
(Prefers Republican Party)
 Write-in

Superior Court Judge Dept. 3
 Richard L. Brosey
 Write-in

State: Partisan Offices

Insurance Commissioner
 Mike Kreidler
(Prefers Democratic Party)
 John R. Adams
(Prefers Republican Party)
 Write-in

County: Partisan Offices

County Commissioner Dist No. 1
 Edna J. Fund
(Prefers Republican Party)
 Ron Averill
(Prefers Republican Party)
 Write-in

PUBLIC UTILITY DISTRICT
PUD Commissioner Dist No. 2
 Dean Dahlin
 James H. Hubenthal
 Write-in

Legislative Dist 19 State Senator
 Brian Hatfield
(Prefers Democratic Party)
 Rick Winsman
(Prefers Republican Party)
 Write-in

County Commissioner Dist No. 2
 Bill Schulte
(Prefers Republican Party)
 Gerald O. Lord
(Prefers Republican Party)
 Write-in

CITY OF MORTON
Annexation of the City of Morton to the Timberland Regional Library
Shall the City of Morton be annexed to and be a part of the Timberland Regional Library?
 Yes
 No

Legislative Dist 19 State Representative Pos. 1
 Dean Takko
(Prefers Democratic Party)
 Dixie Kolditz
(Prefers Republican Party)
 Write-in

Judicial: Non-Partisan Offices

Supreme Court Justice Pos. 2
 Susan Owens
 Write-in

FIRE DISTRICT
Lewis County Fire Protection District No. 6-Chehalis
PROPOSITION TO RENEW A REGULAR EMERGENCY MEDICAL SERVICES PROPERTY TAX LEVY.
The Board of Fire Commissioners of Lewis County Fire Protection District No. 6 adopted Resolution No. 200-000-124 concerning a proposition to renew the District's expiring EMS Levy. The proposition would authorize the Board of Fire Commissioners to renew the expiring EMS levy and continue to fund emergency medical services for its citizens by imposing a regular property tax levy of \$.25 per \$1,000.00 of assessed valuation for each of ten consecutive years to be collected beginning in 2013 subject to applicable statutory limitations. Should this proposition be enacted into law?
 Yes
 No

Legislative Dist 19 State Representative Pos. 2
 Brian E. Blake
(Prefers Democratic Party)
 Tim Sutinen
(Prefers Independent Party)
 Write-in

Supreme Court Justice Pos. 8
6 Yr Short and Full Term
 Steve Gonzalez
 Write-in

Supreme Court Justice Pos. 9
 Sheryl Gordon McCloud
 Richard B. Sanders
 Write-in

Legislative Dist 20 State Senator
 Dan Swecker
(Prefers Republican Party)
 John E. Braun
(Prefers Republican Party)
 Write-in

Court of Appeals, Division 2, District 3, Judge Position 1
 Joel Penoyar
 Write-in

Superior Court Judge Dept. 1
 Nelson E. Hunt
 Write-in

Test Ballot

Test Ballot

11000010200068

800000014220

1023031162

Sample Ballot
Lewis County, Washington
State General Election
November 06, 2012

Precinct 1 SAMPLE

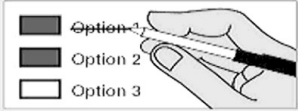
Instructions

Making selections



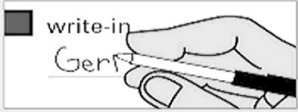
Using a dark blue or black ink pen, completely fill in the box to the left of your choice. Do not use colored ink pens that soak through the ballot. Voting more than once for a contest will be an over vote and no votes for that contest will be counted.

How to correct a mistake



Draw a line through the entire measure response or candidate's name. Then you may make another choice.

Optional write-in



To add a candidate, fill in the box provided to the left of "write-in" and print the name on the line.

Lewis County Elections

For a replacement ballot, or for information on Accessible Voting Units (available 20 days before Election Day), please call us at: (360) 740-1278 or toll-free within Lewis County: (800) 562-6130 ext 1278

State Measures

PROPOSED BY INITIATIVE PETITION

Initiative Measure No. 1185
Initiative Measure No. 1185 concerns tax and fee increases imposed by state government. This measure would restate existing statutory requirements that legislative actions raising taxes must be approved by two-thirds legislative majorities or receive voter approval, and that new or increased fees require majority legislative approval. Should this measure be enacted into law?

- Yes
- No

Initiative Measure No. 1240
Initiative Measure No. 1240 concerns creation of a public charter school system. This measure would authorize up to forty publicly-funded charter schools open to all students, operated through approved, nonreligious, nonprofit organizations, with government oversight; and modify certain laws applicable to them as public schools. Should this measure be enacted into law?

- Yes
- No

PASSED BY THE LEGISLATURE AND ORDERED REFERRED BY PETITION

Referendum Measure No. 74
The legislature passed Engrossed Substitute Senate Bill 6239 concerning marriage for same-sex couples, modified domestic-partnership law, and religious freedom, and voters have filed a sufficient referendum petition on this bill. This bill would allow same-sex couples to marry, preserve domestic partnerships only for seniors, and preserve the right of clergy or religious organizations to refuse to perform, recognize, or accommodate any marriage ceremony. Should this bill be:

- Approved
- Rejected

PROPOSED TO THE LEGISLATURE AND REFERRED TO THE PEOPLE

Initiative Measure No. 502
Initiative Measure No. 502 concerns marijuana. This measure would license and regulate marijuana production, distribution, and possession for persons over twenty-one; remove state-law criminal and civil penalties for activities that it authorizes; tax marijuana sales; and earmark marijuana-related revenues. Should this measure be enacted into law?

- Yes
- No

PROPOSED TO THE PEOPLE BY THE LEGISLATURE-AMENDMENT TO THE STATE CONSTITUTION

Engrossed Senate Joint Resolution No. 8221
The Legislature has proposed a constitutional amendment on implementing the Commission on State Debt recommendations regarding Washington's debt limit. This amendment would, starting July 1, 2014, phase-down the debt limit percentage in three steps from nine to eight percent and modify the calculation date, calculation period, and the term general state revenues. Should this constitutional amendment be:

- Approved
- Rejected

Senate Joint Resolution No. 8223
The Legislature has proposed a constitutional amendment on investments by the University of Washington and Washington State University. This amendment would create an exception to constitutional restrictions on investing public funds by allowing these universities to invest specified public funds as authorized by the legislature, including in private companies or stock. Should this constitutional amendment be:

- Approved
- Rejected

ADVISORY VOTE OF THE PEOPLE

Advisory Vote No. 1 Engrossed Senate Bill 6635
The legislature eliminated, without a vote of the people, a business and occupation tax deduction for certain financial institutions' interest on residential loans, costing \$170,000,000, in its first ten years, for government spending. This tax increase should be:

- Repealed
- Maintained

Advisory Vote No. 2 Substitute House Bill 2590
The legislature extended, without a vote of the people, expiration of a tax on possession of petroleum products and reduced the tax rate, costing \$24,000,000, in its first ten years, for government spending. This tax increase should be:

- Repealed
- Maintained

Federal: Partisan Offices

President and Vice-President of the United States
 Barack Obama and Joe Biden
Democratic Party Nominees

Mitt Romney and Paul Ryan
Republican Party Nominees

Gary Johnson and James P. Gray
Libertarian Party Nominees

Virgil Goode and James N. Clymer
Constitution Party Nominees

Jill Stein and Cheri Honkala
Green Party Nominees

Peta Lindsay and Yari Osorio
Socialism & Liberation Party Nominees

James Harris and Alyson Kennedy
Socialist Workers Party Nominees

Ross C. (Rocky) Anderson and Luis J. Rodriguez
Justice Party Nominees

Write-in

READ: Each candidate for President and Vice President is the official nominee of a political party. For other partisan offices, each candidate may state a political party that he or she prefers. A candidate's preference does not imply that the candidate is nominated or endorsed by the party, or that the party approves of or associates with that candidate.

U.S.Senator
 Maria Cantwell
(Prefers Democratic Party)

Michael Baumgartner
(Prefers Republican Party)

Write-in

Congressional Dist 3 U.S. Representative
 Jaime Herrera Beutler
(Prefers Republican Party)
 Jon T. Haugen
(Prefers Democratic Party)
 Write-in

State: Partisan Offices

Governor
 Jay Inslee
(Prefers Democratic Party)
 Rob McKenna
(Prefers Republican Party)
 Write-in

Lt. Governor
 Brad Owen
(Prefers Democrat Party)
 Bill Finkbeiner
(Prefers Republican Party)
 Write-in

Secretary of State
 Kim Wyman
(Prefers Republican Party)
 Kathleen Drew
(Prefers Democratic Party)
 Write-in

State Treasurer
 Jim McIntire
(Prefers Democratic Party)
 Sharon Hanek
(Prefers Republican Party)
 Write-in

State Auditor
 James Watkins
(Prefers Republican Party)
 Troy Kelley
(Prefers Democratic Party)
 Write-in

Attorney General
 Bob Ferguson
(Prefers Democratic Party)
 Reagan Dunn
(Prefers Republican Party)
 Write-in

11000010100061

Test Ballot

900000015185

Test Ballot

1023031162

Sample Ballot
Lewis County, Washington
State General Election
November 06, 2012

Precinct 1 SAMPLE

Commissioner of Public Lands
 Peter J. Goldmark
(Prefers Democratic Party)
 Clint Didier
(Prefers Republican Party)
 Write-in

Legislative Dist 20 State Representative Pos. 1
 Richard DeBolt
(Prefers Republican Party)
 Write-in

Superior Court Judge Dept. 2
 James W. Lawler
 Write-in

State: Non-Partisan Offices

Superintendent of Public Instruction
 Randy I. Dorn
 Write-in

Legislative Dist 20 State Representative Pos. 2
 Ed Orcutt
(Prefers Republican Party)
 John Morgan
(Prefers Republican Party)
 Write-in

Superior Court Judge Dept. 3
 Richard L. Brosey
 Write-in

State: Partisan Offices

Insurance Commissioner
 Mike Kreidler
(Prefers Democratic Party)
 John R. Adams
(Prefers Republican Party)
 Write-in

County: Partisan Offices

County Commissioner Dist No. 1
 Edna J. Fund
(Prefers Republican Party)
 Ron Averill
(Prefers Republican Party)
 Write-in

PUBLIC UTILITY DISTRICT
PUD Commissioner Dist No. 2
 Dean Dahlin
 James H. Hubenthal
 Write-in

Legislative Dist 19 State Senator
 Brian Hatfield
(Prefers Democratic Party)
 Rick Winsman
(Prefers Republican Party)
 Write-in

County Commissioner Dist No. 2
 Bill Schulte
(Prefers Republican Party)
 Gerald O. Lord
(Prefers Republican Party)
 Write-in

CITY OF MORTON
Annexation of the City of Morton to the Timberland Regional Library
Shall the City of Morton be annexed to and be a part of the Timberland Regional Library?
 Yes
 No

Legislative Dist 19 State Representative Pos. 1
 Dean Takko
(Prefers Democratic Party)
 Dixie Kolditz
(Prefers Republican Party)
 Write-in

Judicial: Non-Partisan Offices

Supreme Court Justice Pos. 2
 Susan Owens
 Write-in

FIRE DISTRICT
Lewis County Fire Protection District No. 6-Chehalis
PROPOSITION TO RENEW A REGULAR EMERGENCY MEDICAL SERVICES PROPERTY TAX LEVY.
The Board of Fire Commissioners of Lewis County Fire Protection District No. 6 adopted Resolution No. 200-000-124 concerning a proposition to renew the District's expiring EMS Levy. The proposition would authorize the Board of Fire Commissioners to renew the expiring EMS levy and continue to fund emergency medical services for its citizens by imposing a regular property tax levy of \$.25 per \$1,000.00 of assessed valuation for each of ten consecutive years to be collected beginning in 2013 subject to applicable statutory limitations. Should this proposition be enacted into law?
 Yes
 No

Legislative Dist 19 State Representative Pos. 2
 Brian E. Blake
(Prefers Democratic Party)
 Tim Sutinen
(Prefers Independent Party)
 Write-in

Supreme Court Justice Pos. 8
6 Yr Short and Full Term
 Steve Gonzalez
 Write-in

Supreme Court Justice Pos. 9
 Sheryl Gordon McCloud
 Richard B. Sanders
 Write-in

Legislative Dist 20 State Senator
 Dan Swecker
(Prefers Republican Party)
 John E. Braun
(Prefers Republican Party)
 Write-in

Court of Appeals, Division 2, District 3, Judge Position 1
 Joel Penoyar
 Write-in

Superior Court Judge Dept. 1
 Nelson E. Hunt
 Write-in

11000010200068

Test Ballot

900000015282

Test Ballot

1023031162