



12000010100011

Sample Ballot

000000009153



Official Ballot  
Lewis County, Washington  
Special Election  
February 11, 2014

Precinct *SAMPLE*

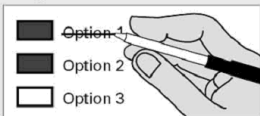
Instructions

How to vote



Use a dark ink pen to completely fill in the box to the left of your choice.  
Vote for one in each race.  
If you vote for more than one, no votes will be counted for that race.

If you make a mistake



Draw a line through the response or candidate's name.  
Then make another choice.

Lewis County Elections

For a replacement ballot, or for information on Accessible Voting Units (available 20 days before Election Day), please call: (360) 740-1278 or toll-free within Lewis County: (800) 562-6130 ext 1278



**Who donates to campaigns?**  
View contributors for candidates and measures

**Public Disclosure Commission**

www.pdc.wa.gov  
Toll Free (877) 601-2828

Boistfort School Dist No. 234

School Maintenance and Operation Levy

The Boistfort School District No. 234 adopted resolution No. 13-14-01 concerning a proposition to replace an expiring levy. This proposition would authorize the District to levy the following amounts for General Fund Maintenance and Operation expenses at the following estimated levy rate on all taxable property within the District:

Collection Year	Approx. Levy Rate per \$1,000 Assessed Value	Levy Amount Raised
2015	\$2.17	\$248,000.00
2016	\$2.17	\$248,000.00
2017	\$2.17	\$248,000.00
2018	\$2.17	\$248,000.00

Should this levy be approved?

☐ Yes  
☐ No

Centralia School Dist No. 401

Educational Maintenance and Operations Levy

To replace an expiring excess levy, the Centralia School District No. 401 Board of Directors adopted Resolution No. 2013-18 concerning educational funding. This proposition authorizes the District to levy the following amounts, in place of the expiring levy, on all taxable property within the District, to support the District's educational maintenance and operations:

Collection Year	Approx. Levy Rate per \$1,000 Assessed Value	Levy Amount
2015	\$3.043	\$5,625,000
2016	\$3.043	\$5,625,000
2017	\$3.043	\$5,625,000
2018	\$3.043	\$5,625,000

Should this proposition be approved?

☐ Yes  
☐ No

Adna School Dist No. 226

School Maintenance and Operation Levy

Proposition 1

The Adna School District No. 226 adopted Resolution No. 13-14-02 concerning a proposition to replace an expiring levy. This proposition would authorize the District to levy the following amounts for General Fund maintenance and operation expenses on all taxable property within the District:

Collection Year	Estimated Levy Rate	Levy Amount
2015	\$2.07	\$661,917.00
2016	\$2.07	\$683,760.00
2017	\$2.07	\$706,324.00
2018	\$2.07	\$729,633.00

Should this proposition be approved?

☐ Yes  
☐ No

Eatonville School Dist No. 404

Replacement of Expiring Educational Programs and Operations Levy

Special Election - Proposition No. 1

The Board of Directors of Eatonville School District No. 404 adopted Resolution No. 626 concerning educational funding. If approved, Proposition No. 1 will authorize the District to levy the following excess taxes, to replace an expiring levy, on all taxable property within the District to support the District's educational programs and daily operations, including teachers, staff, classroom materials and textbooks:

Levy Year	Collection Year	Approx. Levy Rate per \$1,000 of Assessed Value	Levy Amount
2014	2015	\$3.87	\$4,541,940
2015	2016	\$3.87	\$4,678,198
2016	2017	\$3.87	\$4,818,544
2017	2018	\$3.87	\$4,963,100

all as provided in Resolution No. 626. Should Proposition No. 1 be approved?

☐ Yes  
☐ No

Sample Ballot

0663031182



