

Official Ballot
Lewis County, Washington
Primary Election
August 04, 2015

Precinct **SAMPLE**

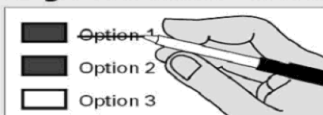
Instructions

How to vote



Use a dark ink pen to completely fill in the box to the left of your choice. Vote for one in each race. If you vote for more than one, no votes will be counted for that race.

If you make a mistake



Draw a line through the response or candidate's name. Then make another choice.

Optional write-in



To vote for a candidate not listed for that race, fill in the box to the left of the line and print the name of the candidate.

Lewis County Elections

For a replacement ballot, or for information on Accessible Voting Units (available 20 days before Election Day), please call: (360) 740-1278 or toll-free within Lewis County: (800) 562-6130 ext 1278



Who donates to campaigns?
View contributors for candidates and measures

Public Disclosure Commission

www.pdc.wa.gov
Toll Free (877) 601-2828

Non-Partisan Offices

CITY OF NAPAIVINE

Napavine City Mayor
4 Year Term

- Jenifer Slempe
- Robert A. (Bob) Wheeler
- John Sayers
- Gary Litteer
-

CITY OF TOLEDO

Toledo City Mayor
4 Year Term

- Nate Cook
- Steve Dobosh
- Eric Duerst
-

CITY OF VADER

Vader City Mayor
4 Year Term

- Janet M. Charlton
- Ken Smith
- Rodney Allison
-

Vader City Council Pos 4
4 Year Term

- Kevin Flynn
- Big Don Iddings
- Judy Costello
-

Sample Ballot 12000010100011

000000001102

Sample Ballot

1033031280

Vote Both Sides

Sample Ballot 12000010200018
000000001205

Official Ballot
Lewis County, Washington
Primary Election
August 04, 2015

Precinct **SAMPLE**

CENTRALIA SCHOOL DISTRICT NO 401
Centralia School Director Pos 2
4 Year Term
 John Elmore
 Kim L. Ashmore
 Ron Averill

FIRE PROTECTION DISTRICT
NO 2-TOLEDO
Fire District No 2 Comm Pos 1
6 Year Term
 Dale Nielsen
 Mark Ferrell
 Mike Thomas
 Jim Groebner

MOSSYROCK SCHOOL DISTRICT NO 206
Mossyrock School Director Dist 2
2 Year Unex Term
 Sona Markholt
 Coleen Reeder
 Don Varo

Fire Protection Dist No 8-Salkum-Silver Crk
Emergency Medical Services Regular Property
Tax Levy
Will Lewis County Fire Protection District No. 8 be authorized to impose a regular property tax levy of up to \$.50 per \$1,000 of assessed valuation each year for each of six consecutive years, beginning in 2015 to be collected in 2016 and each of the five following years (2017-2021), for the provision of Emergency Medical Services, all as provided in Lewis County Fire Protection District No. 8 Resolution 2015-1 and the Laws of the State of Washington RCW 84.52.069?
 Yes
 No

NAPAVINE SCHOOL DISTRICT NO 14
Napavine School Director Pos 5 At-Large
4 Year Term
 John R. Hylton
 Charles (Chip) Styger
 Ryan Chase Gilbert

WATER-SEWER DISTRICT
NO 2-ONALASKA
Water-Sewer District No 2 Comm Pos 1
6 Year Term
 Tim Timmreck
 Kevin Emerson
 Sharla Wherry-Allebaugh

TOLEDO SCHOOL DISTRICT NO 237
Toledo School Director Dist 2
4 Year Term
 John J. Strom
 Monique Norberg
 Wendy K. Carolan

Sample Ballot

1033031280

Vote Both Sides