

Sample Ballot  
 Lewis County, Washington  
 Special Election  
 February 09, 2016

Precinct **SAMPLE**

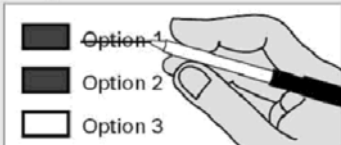
**Instructions**

**How to vote**



Use a dark ink pen to completely fill in the box to the left of your choice. Vote for one in each race. If you vote for more than one, no votes will be counted for that race.

**If you make a mistake**



Draw a line through the response or candidate's name. Then make another choice.

**Lewis County Elections**

For a replacement ballot, or for information on Accessible Voting Units (available 20 days before Election Day), please call: (360) 740-1278 or toll-free within Lewis County: (800) 562-6130 ext 1278



**Who donates to campaigns?**  
 View contributors for candidates and measures

**Public Disclosure Commission**

www.pdc.wa.gov  
 Toll Free (877) 601-2828

**Chehalis School District No. 302  
 Replacement Levies for School Operations**

To maintain current programs, the Chehalis School District No. 302 adopted Resolution No. 15-16-003 concerning a proposition to replace an expiring excess levy for school operations and maintenance. This proposition would authorize the District to levy the following amounts at estimated rates for General Fund expenses on all taxable property within the District:

Collection Year	Approx. Levy Rate per \$1,000 Assessed Value	Levy Amount
2017	\$2.88	\$4,800,000
2018	\$2.89	\$4,900,000
2019	\$2.91	\$5,000,000
2020	\$2.93	\$5,100,000

Should this proposition be approved?

Yes  
 No

**Morton School District No. 214  
 Replacement of Expiring Maintenance and Operation Levy**

Proposition No. 1  
 The Board of Directors of Morton School District No. 214 adopted Resolution No. 2015-16/03, concerning a proposition to finance maintenance and operation expenses. This proposition would authorize the District to levy the following excess taxes, in place of an expiring levy, upon all taxable property within the District, for support of the District's General Fund educational maintenance and operation expenses:

Collection Year	Approximate Levy Rate/\$1,000 Assessed Value	Levy Amount
2017	\$2.55	\$805,000
2018	\$2.55	\$805,000
2019	\$2.55	\$805,000
2020	\$2.55	\$805,000

all as provided in Resolution No. 2015-16/03. Should this proposition be approved?

Yes  
 No

**Napavine School District No. 14  
 Replacement Educational Programs Maintenance and Operations Levy**

Proposition No. 1  
 The Board of Directors adopted Resolution No. 15-16-04 concerning educational funding. This proposition authorizes the District to levy the following excess taxes, to replace an expiring levy, on all taxable property within the District, to support the District's educational programs maintenance and operations:

Collection Years	Approximate Levy Rate/\$1,000 Assessed Value	Levy Amount
2017	\$2.42	\$925,000
2018	\$2.39	\$925,000
2019	\$2.37	\$925,000

all as provided in the Resolution. Should this proposition be approved?

Yes  
 No

10000010100014

000000001102

1133031296

Sample Ballot  
Lewis County, Washington  
Special Election  
February 09, 2016

Precinct *SAMPLE*

**Oakville School District No. 400  
Maintenance and Operation Replacement Levy**

Proposition No. 1  
The Board of Directors of Oakville School District No. 400 adopted Resolution No. 01-2015-02 concerning a proposition to finance maintenance and operation expenses. The proposition would authorize the District to meet the educational needs of its students by levying the following excess taxes, in place of an expiring levy, on all taxable property within the District, for support of the District's General Fund educational maintenance and operation expenses:

Collection Year	Levy Amount	Approximate Levy Rate/\$1,000 Assessed Value
2017	\$376,400	\$2.36
2018	\$376,400	\$2.36

All as provided in Resolution No. 01-2015-02. Should this proposition be approved?

- Yes
- No

**Pe Ell School District No. 301  
Replacement Educational Maintenance and Operation Levy**

Proposition No. 1  
The Board of Directors of Pe Ell School District No. 301 adopted Resolution No. 2015-05, concerning a proposition to replace an expiring levy. This proposition would authorize the District to meet the educational needs of its students by levying the following excess taxes, in place of an expiring levy, on all taxable property within the District, to finance General Fund educational maintenance and operation expenses:

Collection Year	Approximate Levy Rate/\$1,000 Assessed Value	Levy Amount
2017	\$2.32	\$480,000
2018	\$2.32	\$480,000

all as provided in Resolution No. 2015-5. Should this proposition be approved?

- Yes
- No

**Onalaska School District No. 300  
Educational Programs and Operation Replacement Levy**

Proposition No. 1  
The Board of Directors of Onalaska School District No. 300 adopted Resolution No. 15-16-01 concerning a proposition for a replacement levy for education. This proposition would authorize the District to levy the following excess taxes, in place of an expiring levy, upon all taxable property within the District, for support of the District's General Fund educational programs and operation expenses:

Collection Year	Approximate Levy Rate/\$1,000 Assessed Value	Levy Amount
2017	\$2.48	\$1,100,000
2018	\$2.46	\$1,100,000
2019	\$2.44	\$1,100,000

all as provided in Resolution No. 15-16-01. Should this proposition be approved?

- Yes
- No

**Rochester School District No. 401  
Replacement Educational Programs and Operations Levy**

Proposition No. 1  
The Board of Directors of Rochester School District No. 401 adopted Resolution No. 15-16 concerning a proposition to finance educational programs and operations. This proposition would authorize the District to levy the following excess taxes, to replace an expiring levy, on all taxable property within the District, to support the District's educational programs and operations, all as provided in Resolution No. 15-16:

Collection Year	Approximate Levy Rate/\$1,000 Assessed Value	Levy Amount
2017	\$3.89	\$3,963,480
2018	\$3.89	\$4,033,115
2019	\$3.89	\$4,119,985
2020	\$3.89	\$4,198,856

Should this proposition be approved:

- Yes
- No

**Fire Protection District No. 10-Packwood  
Replacemnet EMS Levy**

To replace an expiring Emergency Medical Services (EMS) levy, shall the Lewis County Fire Protection District No. 10 be authorized to impose a regular property tax levy of not to exceed Twenty-Five Cents per \$1,000.00 of assessed valuation for collection in 2017 and the five (5) succeeding years?

- Yes
- No

**Thank You For Voting And Returning Your Ballot  
By Tuesday, February 9th.**

10000010200021

000000001205

1133031296