

Presidential Primary
Official Ballot
May 24, 2016

Lewis County, Washington

Precinct *SAMPLE*

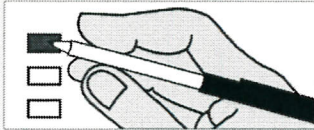
For detailed instructions on how to vote refer to the enclosed insert.

DEMOCRATIC PARTY

REPUBLICAN PARTY

Instructions

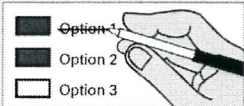
How to vote



Use a dark blue or black ink pen to completely fill in the box to the left of your choice.

Vote for one candidate on the ballot. If you vote for more than one, no votes will be counted.

If you make a mistake



Draw a line through the candidate's name.

Then you may make another choice.

Optional write-in



To vote for a candidate not listed for that race, fill in the box to the left of the line and print the name of the candidate.

Lewis County Elections

For a replacement ballot, or for information on Accessible Voting Units (available 20 days before Election Day), please call us at: (360) 740-1278 or toll-free within Lewis County: (800) 562-6130 ext 1278

Who donates to campaigns?
View contributors for federal candidates
Federal Election Commission
www.fec.gov
Toll Free (800) 424-9530

President of the United States

Vote for only one candidate within the party you marked on your return envelope.

If you mark the Democratic Party box, you must vote for a Democrat.

- Hillary Clinton
- Bernie Sanders
-

President of the United States

Vote for only one candidate within the party you marked on your return envelope.

If you mark the Republican Party box, you must vote for a Republican.

- Ben Carson
- Ted Cruz
- John R. Kasich
- Donald J. Trump
-

Sample Ballot 12000010100011

Sample Ballot

1263031278