

State Primary  
Lewis County, Washington  
Official Ballot  
August 02, 2016

Precinct **SAMPLE**

Instruction Text:

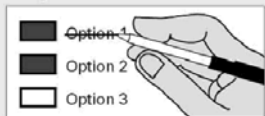
**Instructions**

**How to vote**



Use a dark ink pen to completely fill in the box to the left of your choice. Vote for one in each race. If you vote for more than one, no votes will be counted for that race.

**If you make a mistake**



Draw a line through the response or candidate's name. Then make another choice.

**Optional write-in**



To vote for a candidate not listed for that race, fill in the box to the left of the line and print the name of the candidate.

**Lewis County Elections**

For a replacement ballot, or for information on Accessible Voting Units (available 20 days before Election Day), please call: (360) 740-1278 or toll-free within Lewis County: (800) 562-6130 ext 1278

**Who donates to campaigns?**  
View contributors for candidates and measures  
Public Disclosure Commission  
www.pdc.wa.gov  
Toll Free (877) 801-2828

**READ:** Each candidate for partisan office may state a political party that he or she prefers. A candidate's preference does not imply that the candidate is nominated or endorsed by the party, or that the party approves of or associates with that candidate.

**Federal: Partisan Offices**

**U.S. Senator**

- Philip L. Cornell  
(Prefers Democratic Party)
- Sam Wright  
(Prefers The Human Rights Party)
- Chris Vance  
(Prefers Republican Party)
- Uncle Mover  
(Prefers Republican Party)
- Zach Haller  
(Prefers Independent Party)
- Donna Rae Lands  
(Prefers Conservative Party)
- Mohammad Said  
(Prefers Democratic Party)
- Eric John Makus  
(Prefers Republican Party)
- Alex Tsimerman  
(Prefers Standupamerica Party)
- Dr Pano Churchill  
(Prefers Lincoln Caucus Party)
- Patty Murray  
(Prefers Democratic Party)
- Ted Cummings  
(Prefers Independent Party)
- Thor Amundson  
(Prefers Democratic Party)
- Scott Nazarino  
(Prefers Republican Party)
- Mike Luke  
(Prefers Libertarian Party)
- Chuck Jackson  
(Prefers Independent Party)
- Jeremy Teuton  
(Prefers System Reboot Party)
- 

**Congressional District 3  
U.S. Representative**

- David McDevitt  
(Prefers Democratic Party)
- Jim Moeller  
(Prefers Democratic Party)
- Angela (Angie) Marx  
(Prefers Democratic Party)
- Kathleen (Grandma Warrior) Arthur  
(Prefers Democratic Party)
- Jaime Herrera Beutler  
(Prefers Republican Party)
- L.A. (Worthy) Worthington  
(States No Party Preference)
- 

**State: Partisan Offices**

**Governor**

- Goodspaceguy  
(Prefers Republican Party)
- Bill Hirt  
(Prefers Republican Party)
- Mary Martin  
(Prefers Socialist Worker Party)
- Steve Rubenstein  
(Prefers Independent Party)
- David W. Blomstrom  
(Prefers Fifth Republic Party)
- Johnathan Dodds  
(Prefers Democratic Party)
- Patrick O'Rourke  
(Prefers Democratic Party)
- Christian Pierre Joubert  
(Prefers Holistic Party)
- James Robert Deal  
(Prefers Democratic Party)
- Jay Inslee  
(Prefers Democratic Party)
- Bill Bryant  
(Prefers Republican Party)
- 

12000010100011

Sample Ballot

000000002132

Sample Ballot

1483031255

Vote Both Sides

State Primary  
Lewis County, Washington  
Official Ballot  
August 02, 2016

Precinct *SAMPLE*

Lt. Governor

- Marty McClendon  
(Prefers Republican Party)
- Mark Greene  
(Prefers Citizens Party)
- Phillip Yin  
(Prefers Republican Party)
- Steve Hobbs  
(Prefers Democratic Party)
- Karen Fraser  
(Prefers Democratic Party)
- Bill Penor  
(Prefers Republican Party)
- Paul Addis  
(Prefers Libertarian Party)
- Daniel B. Davies  
(States No Party Preference)
- Karen Wallace  
(Prefers Democratic Party)
- Cyrus Habib  
(Prefers Democratic Party)
- Javier H. Figueroa  
(Prefers Republican Party)
- 

Secretary of State

- Tina Podlodowski  
(Prefers Democratic Party)
- Kim Wyman  
(Prefers Republican Party)
- Tim Turner  
(Prefers Libertarian Party)
- 

State Treasurer

- John Paul Comerford  
(Prefers Democratic Party)
- Marko Liias  
(Prefers Democratic Party)
- Duane Davidson  
(Prefers Republican Party)
- Michael Waite  
(Prefers Republican Party)
- Alec Fiskien  
(Prefers Democratic Party)
- 

State Auditor

- Pat (Patrice) McCarthy  
(Prefers Democratic Party)
- David Golden  
(States No Party Preference)
- Mark Wilson  
(Prefers Independent Party)
- Mark Miloscia  
(Prefers Republican Party)
- Jeff Sprung  
(Prefers Democratic Party)
- 

Attorney General

- Bob Ferguson  
(Prefers Democratic Party)
- Joshua B. Trumbull  
(Prefers Libertarian Party)
- 

Commissioner of Public Lands

- Hilary Franz  
(Prefers Democratic Party)
- Mary Verner  
(Prefers Democratic Party)
- Steven M. Nielson  
(Prefers Libertarian Party)
- Dave Upthegrove  
(Prefers Democratic Party)
- Karen Porterfield  
(Prefers Democratic Party)
- Steve McLaughlin  
(Prefers Republican Party)
- John Stillings  
(Prefers Democratic Party)
- 

State: Non-Partisan Office

Superintendent of Public Instruction

- John Patterson Blair
- Chris Reykdal
- Ron Higgins
- Grazyna Prouty
- Robin Fleming
- Al Runte
- Erin Jones
- KumRoan (Mr. Mak)  
Maksirisombat
- David Spring
- 

State: Partisan Offices

- Insurance Commissioner**
- Mike Kreidler  
(Prefers Democratic Party)
- Justin Murta  
(Prefers Libertarian Party)
- Richard Schrock  
(Prefers Republican Party)
- 

12000010200018

Sample Ballot

000000002235

Sample Ballot

1483031255



22000010300010

Sample Ballot

000000002132



State Primary  
Lewis County, Washington  
Official Ballot  
August 02, 2016

Precinct *SAMPLE*

**State: Legislative Offices**

**Legislative District 19**

**State Senator**  
4-year short and full term

Dean Takko  
(Prefers Democratic Party)

Sue Kuehl Pederson  
(Prefers Independent GOP Party)

**Legislative District 19**  
**State Representative Pos 1**  
2-year short and full term

JD Rossetti  
(Prefers Democratic Party)

Tim Sutinen  
(Prefers Democratic Party)

Teresa Purcell  
(Prefers Democratic Party)

Jim Walsh  
(Prefers Republican Party)

Val (Halleck) Tinney  
(Prefers Republican Party)

**Legislative District 19**  
**State Representative Pos 2**

Jimi O'Hagan  
(Prefers Republican Party)

Brian E. Blake  
(Prefers Democratic Party)

Butch Stavrum  
(Prefers Democratic Party)

**Legislative District 20**  
**State Senator**

John Braun  
(Prefers Republican Party)

**Legislative District 20**  
**State Representative Pos 1**

Richard DeBolt  
(Prefers GOP Party)

**Legislative District 20**  
**State Representative Pos 2**

Ed Orcutt  
(Prefers Republican Party)

**County: Partisan Offices**

**County Commissioner District 1**

Edna J. Fund  
(Prefers Republican Party)

Dan Keahey  
(Prefers Republican Party)

**County Commissioner District 2**

Bobby Jackson  
(Prefers Republican Party)

Bob Bozarth  
(States No Party Preference)

**Judicial: Non-Partisan Offices**

**Supreme Court Justice Position 5**

Barbara Madsen

Greg Zempel

(Zamboni) John Scannell

Sample Ballot

1483031255





000000002326

**Sample Ballot**

22000010400017



This page intentionally left blank



1483031255

**Sample Ballot**